

aa

PRO STD

- 16 pt
- 24 pt
- 38 pt
- 64 pt
- 96 pt

available on this format

★ not available on this format

Retiro Regular 96 pt

Retiro Regular 64 pt

Retiro Regular 38 pt

Retiro Regular 24 pt

Retiro Regular 16 pt

Legal

Typeface design by Jean François Porchez. Copyright ©™ 2006-2015. All rights reserved. Distributed exclusively by Typofonderie.

→ Help

OpenType font families are compatible with Mac OS and Windows platforms. Please consult our Help section for info concerning the language support, OpenType support, installation and use of these fonts.

→ Exclusive Pro version

Retiro Pro version is available from €55 one weight/ one user.

→ Std version

Retiro Std version is available from €45 one weight/ one user.

Various offers available online.

info@typofonderie.com

+33 (0) 146 542 692

typofonderie.com

Regular 38 pt
Regular 64 pt
Regular 24 pt
Regular 96 pt
Regular 96 pt
Regular 64 pt
Regular 16 pt
Regular 38 pt
Regular 64 pt
Regular 24 pt
Regular 64 pt
Regular 64 pt
Regular 24 pt

IMPRENTA REAL DE MADRID

CAPITAL CATALANA

Caminando entre los gran guitarras

Guadalquivir

ROYAL PALACE

Carrer de Montcada

Tres días llenos de terror al más puro estilo mexicano con usted

RODRIGO MI CORAZÓN

Flamenco style

The Golden age of great Spanish typography

Spanish landscape

MEDITERRANEAN

CASA MUSEAU GAUDI BARCELONA

Pro	{[(««abcdefghijklmnopqrstuvwxyz- - — »»)]}@iđ
all capitals feature	{[(««ABCDEFGHIJKLMN ^L OPQRST- - — »»)]}@iđ
all small caps feature	{[(ABCDEFGHIJKLMN ^L OPQRSTUVWXYZ- - — »»)]}
standard	abcdefghijklmnopqrstuvwxyz no No Ia 2o
superiors & ordinals	abcdefghijklmnopqrstuvwxyz <u>No No Ia 2o</u>
standard	fffbffbfhffhfiffifjffjfkffkflfflftff
ligatures	fffbffbfhffhfiffifjffjfkffkflfflftff
minuscule tabular figures (default)	12345678900#€\$¢£f¥ %%%o
capital tabular figures	12345678900#€\$¢£f¥ %/0/00
minuscule figures	12345678900#€\$¢£f¥ %%%o
capital figures	12345678900#€\$¢£f¥ %/0/00
standard	1234567890+-=() 1234567890+-=()
superscript & subscript figures	<u>1234567890+-=()</u> <u>1234567890+-=()</u>
numerator & denominator figures	<u>1234567890</u> <u>1234567890</u>
standard	1/2 2/3 3/5 5/6 6/7 7/8 8/9 0/0 0/00
fractions feature	<u>1/2 2/3 3/5 5/6 6/7 7/8 8/9 % %o</u>

Pro

discretionary ligatures

Thctspst
Thctspst

standard

s

historical forms

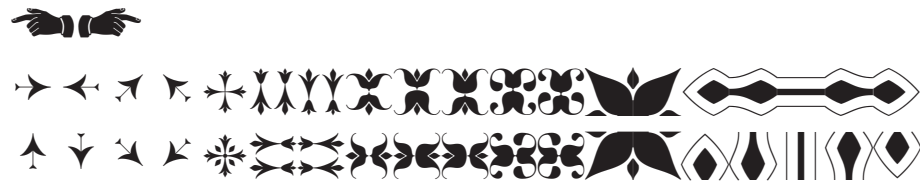
f

standard

<>

abcdefghijklmnopqrs
ABCDEFGHIJKLMNOPS

stylistic set 6
ornaments



standard

AAATLEJLFAITWELLVARTLUA

contextual alternates

AAATLEJLFAITWELLVARTLUA

standard

acefgjkmnprsyzaeæ ffjffjkffkftftt ctspst
ACEFGHJKLMNSTZÆ

stylistic set 1
swashes

acefgjkmnprsyzaeæ ffjffjkffkftftt ctspst
ACEFGHJKLMNSTZÆ

standard

abnquæ fbffb A Æ

stylistic set 2

abnquæ fbffb A Æ

standard

ABCDEFGHIJKLMNOPQRSTUVWXYZÆØ

stylistic set 3
titling alternates

ABCDEFGHIJKLMNOPQRSTUVWXYZÆØ

standard

AZÆ

stylistic set 4

AZÆ

standard

AMNÆ

stylistic set 5

AMNÆ

Std

superiors & ordinals

ao Ia 2o

ao Ia 2o

standard

ff fi ffi fl ffl

ligatures

ff fi ffi fl ffl

minuscule figures (default)

1234567890#€\$¢£f¥

capital tabular figures

1234567890#€\$¢£f¥

standard

123

superscript

123

& subscript figures

1/2 1/4 3/4 0/0 0/00

standard

1/2 1/4 3/4 % ‰

fractions feature

Pro

I AM VERY PLEASED THAT SO MANY PEOPLE LIKE MY TYPEFACES and am happy to see the way they are used in most gases. Once in a while I see them condensed so much that they look absolutely squished or extended so much that they look

discretionary ligatures

I AM VERY PLEASED THAT SO MANY PEOPLE LIKE MY TYPEFACES and am happy to see the way they are used in most cases. Once in a while I see them condensed so much that they look absolutely squished or extended so much that they look

contextual alternates

I AM V^ERY PLEASED THAT SO MANY PEOPLE L^EKE MY TYPEFACES AND AM HAPPY TO SEE THE W^AY THEY AR^E USED IN MOST CASES. ONCE IN A WHI^E I SEE THEM CONDENSED SO MUCH THAT THEY L^OOK ABSOLU^TELY SQUISHED OR

contextual alternates

+ swashes

stylistic set 1

swashes

acefgjk
mnp^rsyz
ACEFHJK
MNSTZ

I AM VERY PLEASED THAT SO MANY PEOPLE LIKE MY TYPEFACES and am happy to see the way they are used in most cases. Once in a while I see them condensed so much that they look absolutely squished or extended so much that they look

stylistic set 2

abnqr A

I AM VERY PLEASED THAT SO MANY PEOPLE LIKE MY TYPEFACES and am happy to see the way they are used in most cases. Once in a while I see them condensed so much that they look absolutely squished or extended so much that they look

stylistic set 3

titling alternates

ABCDE
FGHIJK
LMNOP
...

I AM VERY PLEASED THAT SO MANY PEOPLE LIKE MY TYPEFACES AND AM HAPPY TO SEE THE WAY THEY ARE USED IN MOST CASES. ONCE IN A WHILE GEORGE SEE THEM CONDENSED SO MUCH THAT THEY LOOK ABSO-

stylistic set 4

AZ

I AM VERY PLEASED THAT SO MANY PEOPLE LIKE MY TYPEFACES AND AM HAPPY TO SEE THE WAY THEY ARE

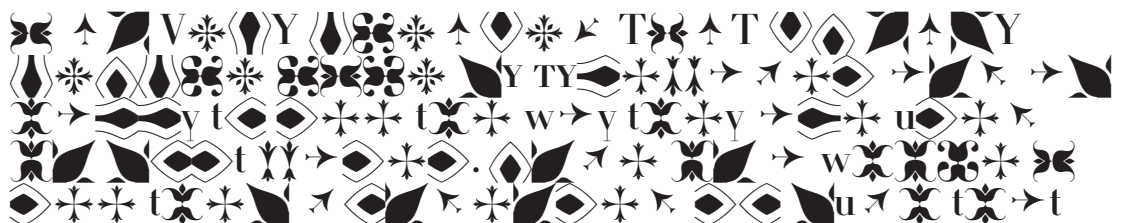
stylistic set 5

AMN

I AM VERY PLEASED THAT SO MANY PEOPLE LIKE MY TYPEFACES AND AM HAPPY TO SEE THE WAY THEY ARE USED IN MOST CASES. ONCE IN A WHILE I SEE THEM CONDENSED SO MUCH THAT THEY LOOK ABSOLUTELY

stylistic set 6

or ornaments



abcdefghijklmnopqrstuvwxyz 0123456789
 ABCDEFGHIJKLMNOPQRSTUVWXYZ &

Decorative

96 pt

A NEW typeface
 had to be found

64 pt

WHILE the simplicity of the
 lines has been preserved,
 THEIR FRAGILITY. A NEW
 TYPEFACE HAD TO BE

38 pt

Pro

with a selection
 of OpenType Pro features

HOWEVER, most of the existing types were old-
 fashioned and not adapted to today's working
 WHILE THE SIMPLICITY OF THE LINES
 HAS BEEN PRESERVED, THE STRAIGHT-

24 pt

THUS we have created Ambroise, a modern and elegant typeface, both
 practical and robust... In recent years, a new tendency has become
 manifest in the decorative arts. A new typeface had to be found with a
 TYPOGRAPHY HAS NOT BEEN NEGLECTED IN THESE DEVEL-
 OPMENTS, WHICH HAVE BEEN EXPRESSED BY AN OBVIOUS

16 pt

abcdefghijklmnopqrstuvwxyz 0123456789
 ABCDEFGHIJKLMNOPQRSTUVWXYZ &

Decorative

96 pt

A NEW typeface
 had to be found

64 pt

WHILE the simplicity of the
 lines has been preserved,
 THEIR FRAGILITY. A NEW
 TYPEFACE HAD TO BE

38 pt

Pro

with a selection
 of OpenType Pro features

HOWEVER, most of the existing types were old-
 fashioned and not adapted to today's working
 WHILE THE SIMPLICITY OF THE LINES
 HAS BEEN PRESERVED, THE STRAIGHT-

24 pt

THUS we have created Ambroise, a modern and elegant typeface, both
 practical and robust... In recent years, a new tendency has become
 manifest in the decorative arts. A new typeface had to be found with a
 TYPOGRAPHY HAS NOT BEEN NEGLECTED IN THESE DEVEL-
 OPMENTS, WHICH HAVE BEEN EXPRESSED BY AN OBVIOUS

16 pt

abcdefghijklmnopqrstuvwxyz 0123456789
 ABCDEFGHIJKLMNOPQRSTUVWXYZ &

Decorative

96 pt

A NEW typeface
 had to be found

64 pt

WHILE the simplicity of the
 lines has been preserved,
 THEIR FRAGILITY. A NEW
 TYPEFACE HAD TO BE

38 pt

Pro

with a selection
 of OpenType Pro features

HOWEVER, most of the existing types were old-
 fashioned and not adapted to today's working
 WHILE THE SIMPLICITY OF THE LINES
 HAS BEEN PRESERVED, THE STRAIGHT-

24 pt

THUS we have created Ambroise, a modern and elegant typeface, both
 practical and robust... In recent years, a new tendency has become
 manifest in the decorative arts. A new typeface had to be found with a
 TYPOGRAPHY HAS NOT BEEN NEGLECTED IN THESE DEVEL-
 OPMENTS, WHICH HAVE BEEN EXPRESSED BY AN OBVIOUS

16 pt

abcdefghijklmnopqrstuvwxyz 0123456789
 ABCDEFGHIJKLMNOPQRSTUVWXYZ &

Decorative

96 pt

A NEW typeface
 had to be found

64 pt

WHILE the simplicity of the
 lines has been preserved,
 THEIR FRAGILITY. A NEW
 TYPEFACE HAD TO BE

38 pt

Pro

with a selection
 of OpenType Pro features

HOWEVER, most of the existing types were old-
 fashioned and not adapted to today's working
 WHILE THE SIMPLICITY OF THE LINES
 HAS BEEN PRESERVED, THE STRAIGHT-

24 pt

THUS we have created Ambroise, a modern and elegant typeface, both
 practical and robust... In recent years, a new tendency has become
 manifest in the decorative arts. A new typeface had to be found with a
 TYPOGRAPHY HAS NOT BEEN NEGLECTED IN THESE DEVEL-
 OPMENTS, WHICH HAVE BEEN EXPRESSED BY AN OBVIOUS

16 pt

abcdefghijklmnopqrstuvwxyz 0123456789
 ABCDEFGHIJKLMNOPQRSTUVWXYZ &

Decorative

96 pt

A NEW typeface
 had to be found

64 pt

WHILE the simplicity of the
 lines has been preserved,
 THEIR FRAGILITY. A NEW
 TYPEFACE HAD TO BE

38 pt

Pro

with a selection
 of OpenType Pro features

HOWEVER, most of the existing types were old-
 fashioned and not adapted to today's working
 WHILE THE SIMPLICITY OF THE LINES
 HAS BEEN PRESERVED, THE STRAIGHT-

24 pt

THUS we have created Ambroise, a modern and elegant typeface, both
 practical and robust... In recent years, a new tendency has become
 manifest in the decorative arts. A new typeface had to be found with a
 TYPOGRAPHY HAS NOT BEEN NEGLECTED IN THESE DEVEL-
 OPMENTS, WHICH HAVE BEEN EXPRESSED BY AN OBVIOUS

16 pt

abcdefghijklmnopqrstuvwxyz 0123456789
 ABCDEFGHIJKLMNOPQRSTUVWXYZ &

Decorative

96 pt

A NEW typeface
 had to be found

64 pt

WHILE the simplicity of the
 lines has been preserved,
 THEIR FRAGILITY. A NEW
 TYPEFACE HAD TO BE

38 pt

Pro

with a selection
 of OpenType Pro features

HOWEVER, most of the existing types were old-
 fashioned and not adapted to today's working
 WHILE THE SIMPLICITY OF THE LINES
 HAS BEEN PRESERVED, THE STRAIGHT-

24 pt

THUS we have created Ambroise, a modern and elegant typeface, both
 practical and robust... In recent years, a new tendency has become
 manifest in the decorative arts. A new typeface had to be found with a
 TYPOGRAPHY HAS NOT BEEN NEGLECTED IN THESE DEVEL-
 OPMENTS, WHICH HAVE BEEN EXPRESSED BY AN OBVIOUS

16 pt