

aa

PRO STD TRY

- ExtraLight
- ExtraLight Italic
- Light
- Light Italic
- Regular
- Italic
- Demi
- Demi Italic
- Bold
- Bold Italic
- ExtraBold
- ExtraBold Italic
- Heavy
- Heavy Italic

available on this format

not available on this format

Arsen Normal ExtraLight

Arsen Normal ExtraLight Italic

Arsen Normal Light

Arsen Normal Light Italic

Arsen Normal Regular

Arsen Normal Italic

Arsen Normal Demi

Arsen Normal Demi Italic

Arsen Normal Bold

Arsen Normal Bold Italic

Arsen Normal ExtraBold

Arsen Normal ExtraBold Italic

Arsen Normal Heavy

Arsen Normal Heavy Italic

Legal

Typeface design by Joachim Vu. Copyright ©™ 2016-2023. All rights reserved. Distributed exclusively by Typofonderie.

→ Help

OpenType font families are compatible with Mac OS and Windows platforms. Please consult our Help section for info concerning the language support, OpenType support, installation and use of these fonts.

→ Exclusive Pro version

Arsen Pro version is available from €55 one weight/ one user.

→ Std version

Arsen Std version is available from €45 one weight/ one user.

Various offers available online.

→ Exclusive Try-out version

Download for free the Arsen Try-out version! Try-out format grants you rights solely for preparatory works, evaluation and internal testings use only of the licensed owner. Neither production, nor final sketch, final artwork are permitted.

aa

PRO STD TRY

- ExtraLight
- ExtraLight Italic
- Light
- Light Italic
- Regular
- Italic
- Demi
- Demi Italic
- Bold
- Bold Italic
- ExtraBold
- ExtraBold Italic
- Heavy
- Heavy Italic

 available on this format

 not available on this format

Arsen Text ExtraLight

Arsen Text ExtraLight Italic

Arsen Text Light

Arsen Text Light Italic

Arsen Text Regular

Arsen Text Italic

Arsen Text Demi

Arsen Text Demi Italic

Arsen Text Bold

Arsen Text Bold Italic

Arsen Text ExtraBold

Arsen Text ExtraBold Italic

Arsen Text Heavy

Arsen Text Heavy Italic

Legal

Typeface design by Joachim Vu. Copyright ©™ 2016-2023. All rights reserved. Distributed exclusively by Typofonderie.

→ Help

OpenType font families are compatible with Mac OS and Windows platforms. Please consult our Help section for info concerning the language support, OpenType support, installation and use of these fonts.

→ Exclusive Pro version

Arsen Pro version is available from €55 one weight/ one user.

→ Std version

Arsen Std version is available from €45 one weight/ one user.

Various offers available online.

→ Exclusive Try-out version

Download for free the Arsen Try-out version! Try-out format grants you rights solely for preparatory works, evaluation and internal testings use only of the licensed owner. Neither production, nor final sketch, final artwork are permitted.

aa

PRO STD TRY

- ExtraLight
- ExtraLight Italic
- Light
- Light Italic
- Regular
- Italic
- Demi
- Demi Italic
- Bold
- Bold Italic
- ExtraBold
- ExtraBold Italic
- Heavy
- Heavy Italic

available on this format

not available on this format

Arsen Display ExtraLight

Arsen Display ExtraLight Italic

Arsen Display Light

Arsen Display Light Italic

Arsen Display Regular

Arsen Display Italic

Arsen Display Demi

Arsen Display Demi Italic

Arsen Display Bold

Arsen Display Bold Italic

Arsen Display ExtraBold

Arsen Display ExtraBold Italic

Arsen Display Heavy

Arsen Display Heavy Italic

Legal

Typeface design by Joachim Vu. Copyright ©™ 2016-2023. All rights reserved. Distributed exclusively by Typofonderie.

→ Help

OpenType font families are compatible with Mac OS and Windows platforms. Please consult our Help section for info concerning the language support, OpenType support, installation and use of these fonts.

→ Exclusive Pro version

Arsen Pro version is available from €55 one weight/ one user.

→ Std version

Arsen Std version is available from €45 one weight/ one user.

Various offers available online.

→ Exclusive Try-out version

Download for free the Arsen Try-out version! Try-out format grants you rights solely for preparatory works, evaluation and internal testings use only of the licensed owner. Neither production, nor final sketch, final artwork are permitted.

aa

PRO STD TRY

- ExtraLight
- ExtraLight Italic
- Light
- Light Italic
- Regular
- Italic
- Demi
- Demi Italic
- Bold
- Bold Italic
- ExtraBold
- ExtraBold Italic
- Heavy
- Heavy Italic

 available on this format not available on this format

Arsen Affiche ExtraLight

Arsen Affiche ExtraLight Italic

Arsen Affiche Light

Arsen Affiche Light Italic

Arsen Affiche Regular

Arsen Affiche Italic

Arsen Affiche Demi

Arsen Affiche Demi Italic

Arsen Affiche Bold

Arsen Affiche Bold Italic

Arsen Affiche ExtraBold

Arsen Affiche ExtraBold Italic

Arsen Affiche Heavy

*Arsen Affiche Heavy Italic***Legal**

Typeface design by Joachim Vu. Copyright ©™ 2016-2023. All rights reserved. Distributed exclusively by Typofonderie.

→ Help

OpenType font families are compatible with Mac OS and Windows platforms. Please consult our Help section for info concerning the language support, OpenType support, installation and use of these fonts.

→ Exclusive Pro version

Arsen Pro version is available from €55 one weight/ one user.

→ Std version

Arsen Std version is available from €45 one weight/ one user.

Various offers available online.

→ Exclusive Try-out version

Download for free the Arsen Try-out version! Try-out format grants you rights solely for preparatory works, evaluation and internal testings use only of the licensed owner. Neither production, nor final sketch, final artwork are permitted.

Text Heavy
Affiche Light
Text Light Italic
Text Bold
Affiche ExtraLight
Display Heavy Italic
Normal Light
Affiche Heavy
Text Regular
Affiche Light Italic
Display Bold
Normal Demi

BOULEVARD

Marchand de Frivolités

Revue des Sciences Naturelles Appliquées

Rue de Babylone

SMOKING

Plumes & Rubans

Le Bouchon de Cristal

Bon Marché

La voiture monta au pas le boulevard Saint Michel

Spécimen de Caractères

L'AURORE

En œuvrant parfaire l'œuvre

OTF Std lat1

| | | |
|-----|-----|------|
| 1a | E23 | E3/4 |
| 136 | 136 | |
| fi | ct | |

abcdefghijklmnopqrstuvwxyz
 ABCDEFGHIJKLMNOPQRSTUVWXYZ
 1234567890#€\$¢£¥
 1234567890#€\$¢£¥
 1/41/23/4%‰¹²³
 +-±×÷=≠~≈^<>≤≥¬∞◇ΔΩδ∫√ΣΠπμ°ℓ∅
 ()[]{};:~...•!?!;ç“”„,„◁▷'''
 /&|!—_—*†‡§¶&@©®©™ª°
 \ ` ´ ´ ^ ^ ˇ ˇ ~ ~ ¨ ¨ - - ˘ ˘ ° ° „ „ . .

à á â ã ä å æ ç è é ê ë ì í î ï ð ñ ò ó ô õ ö ø œ š ß ù ú û ü ý ÿ ž đ þ
 À Á Â Ã Ä Å Æ Ç È É Ê Ë Ì Í Î Ï Ñ Ò Ó Ô Õ Ö Ø Æ
 Š Š Š Û Ü Ú Û Ü Ý Ÿ Ž Đ Þ
 fi ffi fl ffi fl ct st
 J → ← *

OTF Std lat1

| | | |
|-----|-----|----|
| 1ª | E²³ | E¾ |
| 136 | 136 | |
| fi | ct | |

abcdefghijklmnopqrstuvxyz

ABCDEFGHIJKLMNOPQRSTUVWXYZ

1234567890#€\$¢£¥

İ234567890#€\$¢£¥

¼½¾%‰ 123

+ - ± × ÷ = ≠ ~ ≈ ^ < > ≤ ≥ ¬ ∞ ◊ Δ Ω δ ∫ √ Σ Π π μ ° ℓ €

()[]{};:~... •!?!;ç“”„„«»'”

/\|!—_—*†‡§¶&@©®ª™ao

˘ ˙ ˚ ˇ ˛ ˜ ˝ ˞ ˟ ˠ ˡ ˢ ˣ ˤ ˥ ˦ ˧ ˨ ˩ ˪ ˫ ˬ ˭ ˮ ˯ ˰ ˱ ˲ ˳ ˴ ˵ ˶ ˷ ˸ ˹ ˺ ˻ ˼ ˽ ˾ ˿

à á â ã ä å æ ç è é ê ë ì í î ï ð ñ ò ó ô õ ö ø œ š ß ù ú û ü ý ž đ þ

À Á Â Ã Ä Å Æ Ç È É Ê Ë Ì Í Î Ï Ñ Ò Ó Ô Õ Ö Ø Ò

Š Š Š Ù Ú Û Ü Ý Ž Ž Đ Þ

fi ffi fl ffl ffl ct st

J → ← *

OTF Std lat1

1^a E²/₃ E³/₄
136 136
fi ct

abcdefghijklmnopqrstuvwxz

ABCDEFGHIJKLMNOPQRSTUVWXYZ

1234567890#€\$%&'¥

1234567890#€\$%&'¥

1/4 1/2 3/4 ° % ‰

+ - ± × ÷ = ≠ ~ ≈ ^ < > ≤ ≥ ¬ ∞ ∅ Δ Ω δ ∫ √ Σ Π π μ ° ℓ €

() [] { } , ; : ... • ! ? ; ' “ ” „ ‚ © ® ™

^ | _ - _ * † ‡ § ¶ & @ © ® ™

˘ ˙ ˚ ˇ ˛ ˜ ˝ ˆ ˇ ˘ ˙ ˚ ˇ ˛ ˜ ˝

à á â ã ä å æ ç è é ê ë ì í î ï ð ñ ò ó ô õ ö ø ù ú û ü ý ÿ ž

À Á Â Ã Ä Å Æ Ç È É Ê Ë Ì Í Î Ï Ñ Ò Ó Ô Õ Ö Ø Ù

Š Š Š Ÿ Ÿ Ÿ Ž Đ P

f i f f f f f f f f f f l c t s t

J → ← *

OTF Pro lat

1ª 1º E1 E2 E3/4
136 136 136 136
{R AA} Q Q e e e
fi ct → S1 S2
S3 S4 S5 S6 S7
S8 S9 S10

fbffbffhffhffffiffjffkffkflfflftfft

fbffbffhffhffffiffjffkffkflfflftfft

Theſtstsp & &

Theſtstsp & &

a JJ &&

a JJ &&

kvwxy vwxy uvwxy

AKRX AXA ÆX KVVVXY VVVVXY VVVVXY

FT AKRX AXA ÆX KVVVXY VVVVXY VVVVXY

àáâãäåæ çà àáâãäåæ çà àáâãäåæ çà àáâãäåæ çà IJÏ IJÏ

ķw̄w̄w̄w̄ȳȳȳȳ w̄w̄w̄w̄ȳȳȳȳ ūūūūȳȳȳȳ ūūūūȳȳȳȳ

ÀÁÂÃÄÅÆ ÇÀ ÁÁÃÄÄÄÄÀÆ Æ ÀÁÃÄÄÄÄÀÆ ÀÁÃÄÄÄÄÀÆ Æ

ḶḶḶḶḶḶḶḶ ḶḶḶḶḶḶḶḶ ḶḶḶḶḶḶḶḶ

ÀÁÃÄÄÄÄÀÆ Æ ÀÁÃÄÄÄÄÀÆ Æ

ÀÁÃÄÄÄÄÀÆ Æ ḶḶḶḶḶḶḶḶ ḶḶḶḶḶḶḶḶ

ḶḶḶḶḶḶḶḶ

↔ ← ↑ ↓ ↗ ↘ ↙ ↚

☞ ☜ ☝ ☞

○ □ ● ■ ◆ * ✱

① ② ③ ④ ⑤ ⑥ ⑦ ⑧ ⑨ ⑩

① ② ③ ④ ⑤ ⑥ ⑦ ⑧ ⑨ ⑩

OTF Pro lat

| | | | | |
|-----------------|-----------------|-------------------------------|-------------------------------|-------------------------------|
| 1 ^a | 1 ^{er} | E ¹ / ₅ | E ² / ₃ | E ³ / ₄ |
| 136 | 136 | 136 | 136 | |
| {R- AA} | QQ | ee | eee | |
| ff | ct | → | Ss ¹ | Ss ² |
| Ss ³ | Ss ⁴ | Ss ⁵ | Ss ⁶ | Ss ⁷ |
| Ss ⁸ | Ss ⁹ | Ss ¹⁰ | | |

fbffbffhffhffffiffjffjfkffkflfflftfft

fbffbffhffhffffiffjffjfkffkflfflftfft

Thctstsp & &

Thctstsp & &

a JJ &&

a JJ &&

kvwxy vwxy uvwxy

AKRX AXA ÆX KVVVXY VVVVXY VVVVXY

FT AKRX AXA ÆX KVVVXY VVVVXY VVVVXY

àáâãäåäåáâq IJÎ IJÏ àáâãäåäåáâq IJÎ IJÏ

ķw̄w̄w̄ȳȳȳ w̄w̄w̄ȳȳȳ

ùúûüüüùúúw̄w̄w̄ȳȳȳ

ÀÁÂÃÄÅÄÅÁÀĶŔŖŔ ÀÁÂÃÄÅÄÅÁÀĶ ÀÁÂÃÄÅÄÅÁÀĶÆ

ĶW̄W̄W̄ȲȲȲ W̄W̄W̄ȲȲȲ W̄W̄W̄ȲȲȲ

ÀÁÂÃÄÅÄÅÁÀĶŔŖŔ ÀÁÂÃÄÅÄÅÁÀĶ

ÀÁÂÃÄÅÄÅÁÀĶÆ ĶW̄W̄W̄ȲȲȲ

W̄W̄W̄ȲȲȲ W̄W̄W̄ȲȲȲ

→←↑↓↗↖↘↙

☞☛☜☝

○□●■◆*✱

①②③④⑤⑥⑦⑧⑨⑩

①②③④⑤⑥⑦⑧⑨⑩

OTF Pro lat

| | | | | |
|-----------------|-----------------|-------------------------------|-------------------------------|-------------------------------|
| 1ª | 1 ^{er} | E ¹ / ₅ | E ² / ₃ | E ³ / ₄ |
| 136 | 136 | 136 | 136 | |
| {R- AA} | QQ | ee | eee | |
| ff | ct | → | Ss ¹ | Ss ² |
| Ss ³ | Ss ⁴ | Ss ⁵ | Ss ⁶ | Ss ⁷ |
| Ss ⁸ | Ss ⁹ | Ss ¹⁰ | | |

fbffbffhffhffffiffjffjfkffkflfflftfft

fbffbffhffhffffiffjffjfkffkflfflftfft

Thctstsp & &

Thctstsp & &

a JJ &&

a JJ &&

kvwxy vwxy uvwxy

AKRX AXA ÆX KVWXY VWXY VWXY

FT AKRX AXA ÆX KVWXY VWXY VWXY

àáâãäåäåááq IJÎ IJÏ àáâãäåäåááq IJÎ IJÏ

ķẀẁẂẃẄẅỲỴỶẏ ðẀẁẂẃẄẅỲỴỶ ùúûüũüũúúϣẀẁẂẃẄẅỲỴỶ

ÀÁÂÃÄÅÄÅááq, ÌÍÎÏ, ÀÁÂÃÄÅÄÅááq, ÀÁÂÃÄÅÄÅááq, Æ

ķẀẁẂẃẄẅỲỴỶ ðẀẁẂẃẄẅỲỴỶ ðẀẁẂẃẄẅỲỴỶ

ÀÁÂÃÄÅÄÅááq, ÌÍÎÏ, ÀÁÂÃÄÅÄÅááq

ÀÁÂÃÄÅÄÅááq, É, ķẀẁẂẃẄẅỲỴỶ ðẀẁẂẃẄẅỲỴỶ

ẀẁẂẃẄẅỲỴỶ

→←↑↓↗↖↘↙

↪↩↬↭

○□●■◆*✳

①②③④⑤⑥⑦⑧⑨⑩

①②③④⑤⑥⑦⑧⑨⑩

OTF Pro lat

| | | | | |
|-----------------|-----------------|-----------------------------|-----------------------------|-----------------------------|
| 1 ^a | 1 ^{er} | E ¹ ₅ | E ² ₃ | E ³ ₄ |
| 136 | 136 | 136 | 136 | |
| {R- AA} | QQ | eε | eeε | |
| ff | ct | → | Ss ¹ | Ss ² |
| Ss ³ | Ss ⁴ | Ss ⁵ | Ss ⁶ | Ss ⁷ |
| Ss ⁸ | Ss ⁹ | Ss ¹⁰ | | |

fbffbfhffhffffiffjffjfkffkflfflftfft

fbffbfhffhffffiffjffjfkffkflfflftfft

Thctstsp & &

Thctstsp & &

a Jj &&

a Jj &&

kvwxy vwxy uvwxy

AKRX AXA ÆX KVWXY VWXY VWXY

FT AKRX AXA ÆX KVWXY VWXY VWXY

àáâãäåäåáà ıĴĴ İĴ àáâãäåäåáà ıĴ İĴ

ķwŵwŵyŷyŷ ŵwŵwŵyŷyŷ ŭûũüũüúwŵwŵyŷyŷ

ÀÁÂÃÄÅÄÅÀǺǻǾǾǺǻǾǾ ÀÁÂÃÄÅÄÅÀǺǻǾǾǺǻǾǾǺǻǾǾ

ķwŵwŵyŷyŷ ŵwŵwŵyŷyŷ ŵwŵwŵyŷyŷ

ÀÁÂÃÄÅÄÅÀǺǻǾǾǺǻǾǾ ÀÁÂÃÄÅÄÅÀǺǻǾǾǺǻǾǾ

ÀÁÂÃÄÅÄÅÀǺǻǾǾǺǻǾǾ É ķwŵwŵyŷyŷ ŵwŵwŵyŷyŷ

ŵwŵwŵyŷyŷ

→←↑↓↗↖↘↙

☞☛☜☝

○□●■◆✱✳

①②③④⑤⑥⑦⑧⑨⑩

①②③④⑤⑥⑦⑧⑨⑩

Pro

all capitals *feature*

(«abcdefghijklmnopqrstuvwxyz—»)@i;
 («ABCDEFGHIJKLMNOPQRSTUVWXYZ—»)@i;

standard

abcdefghijklmnopqrstuvwxyz no No 1a 2o

superiors & ordinals

abcdefghijklmnopqrstuvwxyz N^o N^o 1^a 2^o

standard

fbffbfffhffhfiffifjffjfkffkflfflftfft

ligatures

fbffbfffhffhfiffifjffjfkffkflfflftfft

minuscule tabular figures

12345678900#\$¢£f¥

capital tabular figures

12345678900#\$¢£f¥

minuscule figures

12345678900#\$¢£f¥

capital figures

12345678900#\$¢£f¥

(default)

standard

1234567890+-=() 1234567890+-=()

superscript

& subscript figures

1234567890⁺₋₌₍₎ 1234567890⁺₋₌₍₎

numerator

& denominator figures

1234567890 1234567890

standard

1/2 2/3 3/5 5/6 6/7 7/8 8/9 0/0 0/00

fractions feature

1/2 2/3 3/5 5/6 6/7 7/8 8/9 0/0 0/00

Pro

ctstspTh ctstspTh
ctstspTh ctstspTh

Discretionary ligatures

Standard

a J J & a J J &

Ss01: Alternate: Short J

a J J & a J J &

Ss02: Alternate: single-story a
or double-story a in italic

a J J & a J J &

Ss03: Alternate: Ampersand

a J J & a J J &

Standard

RA HA AXA LA AKV NY VWY TY

Compact serifs: Capitals

ss04, contextual alternates

RA HA AXA LA AKV NY VWY TY

Standard

Py rw gu kvx wfu Ta Fru Tegx Fotyz Tosca

Compact serifs: Minuscules

ss05, contextual alternates

Py rw gu kvx wfu Ta Fru Tegx Fotyz Tosca

Short serifs: Capitals

ss06, contextual alternates

Py rw gu kvx wfu Ta Fru Tegx Fotyz Tosca

Standard

abcdefghOH•*.1234567890

Ss07: Symbols

→←↑↓↗↖↘↙○□✱✱◆①②③④⑤⑥⑦⑧⑨⑩

Ss08: Symbols: Manicules

☞☛☜☝↗↖↘↙○□✱✱◆①②③④⑤⑥⑦⑧⑨⑩

Ss09: Boxes: Checked

→←↑↓↗↖↘↙●■✱✱◆①②③④⑤⑥⑦⑧⑨⑩

Ss10: Figures: Black

→←↑↓↗↖↘↙○□✱✱◆①②③④⑤⑥⑦⑧⑨⑩

Pro

standard

① LA VESTE *RAYÉE*
 Compact serifs: Capitals
 ss04, contextual alternates
 between capitals
LA VESTE *RAYÉE*

standard

 ② THE PARISIAN Turlot foundry was set up by Torey in 1838, with the Duget and Laurent **type funds**. From ExtraLight to Heavy, with Features, Tabular & proportional figures *Arsen is a Tribute of the Elzevir N°3*.

 Compact serifs: Capitals
 ss04, contextual alternates
 between capitals

THE PARISIAN Turlot foundry was set up by Torey in 1838,

 Compact serifs: Minuscles
 ss05, contextual alternates
 between minuscules and
 capitals

 with the DUGET AND LAURENT **type funds**. From ExtraLight

 Short serifs: Capitals
 ss06, contextual alternates
 F T with minuscules specific's
 kerning

 to Heavy, with Features, Tabular & proportional figures *Arsen*

 Ss03:
 Alternate: Ampersand

is a Tribute of the Elzevir N°3.

Exemple of matching sizes

① Arsen Affiche 49 pt

② Arsen Display 30 pt

Pro

I'M QUITE PLEAS**E**D & TOUCH**E**D IN 2017 WITH THE KEEN APPRECIATION OF MY ŒUVRE and am happy to see the way they are beautifully used in most zones. I'd rather people use the 1, 2 or 6 faces as they are. If they don't work for a specific purpose, *the designer should choose a more appropriate typeface rather than reworking the letter shapes on their own. It ruins the sensitivity of the forms and makes all*

Small Capitals
+ Ss04:
Compact serifs: Capitals

I'M QUITE PLEAS**E**D & TOUCH**E**D IN 2017 WITH THE KEEN APPRECIATION OF MY ŒUVRE AND AM HAPPY TO SEE THE WAY THEY ARE BEAUTIFULLY USED IN MOST ZONES. I'D RATHER PEOPLE USE THE 1, 2 OR 6 FACES AS THEY ARE. IF THEY DON'T WORK FOR A SPECIFIC PURPOSE, *THE DESIGNER SHOULD CHOOSE A MORE APPROPRIATE TYPEFACE RATHER THAN REWORKING THE LETTER SHAPES ON THEIR OWN. IT RUINS*

Discretionary ligatures
+ Minuscule figures

I'M QUITE PLEAS**E**D & TOUCH**E**D IN 2017 WITH THE KEEN APPRECIATION OF MY ŒUVRE and am happy to see the way they are beautifully used in most zones. I'd rather people use the 1, 2 or 6 faces as they are. If they don't work for a specific purpose, *the designer should choose a more appropriate typeface rather than reworking the letter shapes on their own. It ruins the sensitivity of the forms and makes all*

Ss02:
Alternate: simple-story a
Alternate: double-story a

à
â

I'M QUITE PLEAS**E**D & TOUCH**E**D IN 2017 WITH THE KEEN APPRECIATION OF MY ŒUVRE and am happy to see the way they are beautifully used in most zones. I'd rather people use the 1, 2 or 6 faces as they are. If they don't work for a specific purpose, *the designer should choose a more appropriate typeface rather than reworking the letter shapes on their own. It ruins the sensitivity of the forms and makes all*

Ss03:
Alternate: Ampersand

&

I'M QUITE PLEAS**E**D & TOUCH**E**D IN 2017 WITH THE KEEN APPRECIATION OF MY ŒUVRE and am happy to see the way they are beautifully used in most zones. I'd rather people use the 1, 2 or 6 faces as they are. If they don't work for a specific purpose, *the designer should choose a more appropriate typeface rather than reworking the letter shapes on their own. It ruins the sensitivity of the forms and makes all*

Ss05:
Compact serifs: Minuscules
+ Ss06:
Short serifs: Capitals

I'M QUITE PLEAS**E**D & TOUCH**E**D IN 2017 WITH THE KEEN APPRECIATION OF MY ŒUVRE and am happy to see the way they are beautifully used in most zones. I'd rather people use the faces as they are. If they don't work for a specific purpose, *the designer should choose a more appropriate typeface rather than reworking the letter shapes on their own. It ruins the sensitivity of the forms and makes all my care-*

Ss07:
Symbols

I'M QUITE PLEAS**E**D & TOUCH**E**D IN 2017 WITH THE KEEN APPRECIATION OF MY ŒUVRE and am happy to see the way they are beautifully used in most zones. I'd rather people use the 1, 2 or 6 faces as they are. If they don't work for a specific purpose, *the designer should choose a more appropriate typeface rather than reworking the letter shapes on their own. It ruins the sensitivity of the forms and makes all*

Ss08:
Manicules
+ Ss09:
Boxes:Checked

I'M QUITE PLEAS**E**D & TOUCH**E**D IN 2017 WITH THE KEEN APPRECIATION OF MY ŒUVRE and am happy to see the way they are beautifully used in most zones. I'd rather people use the 1, 2 or 6 faces as they are. If they don't work for a specific purpose, *the designer should choose a more appropriate typeface rather than reworking the letter shapes on their own. It ruins*

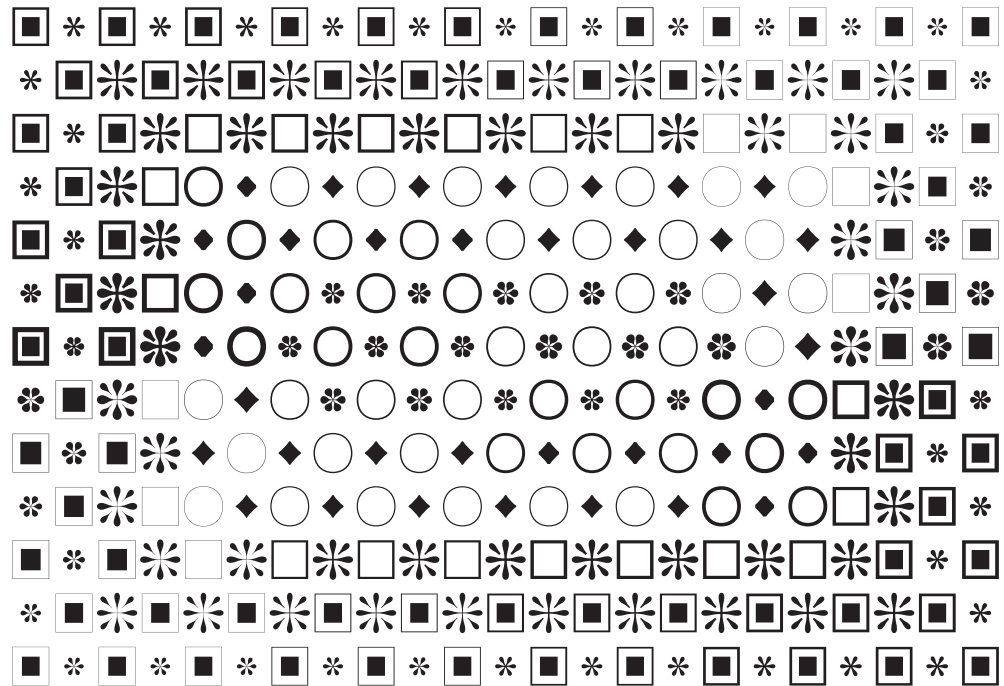
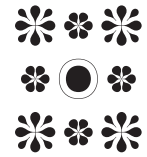
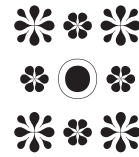
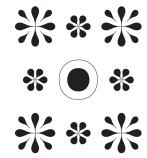
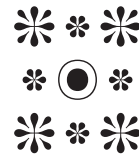
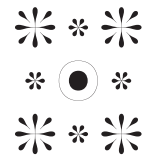
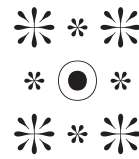
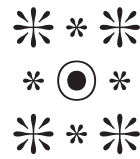
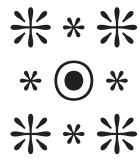
Ornaments samples

Arsen Text

Arsen Normal

Arsen Display

Arsen Affiche



Numerals matching weights

Tabular figures widths
(in lining or oldstyle versions)
are compatible in many
weight combinations.

Normal ExtraLight

12345678900#€\$¢£f¥

Normal ExtraLight Italic

12345678900#€\$¢£f¥

Normal Light

I2345678900#€\$¢£f¥

Normal Light Italic

I2345678900#€\$¢£f¥

Normal Regular

12345678900#€\$¢£f¥

Normal Italic

12345678900#€\$¢£f¥

Normal Demi

I2345678900#€\$¢£f¥

Normal Demi Italic

I2345678900#€\$¢£f¥

Normal Bold

12345678900#€\$¢£f¥

Normal Bold Italic

12345678900#€\$¢£f¥

Normal Extrabold

I2345678900#€\$¢£f¥

Normal Extrabold Italic

I2345678900#€\$¢£f¥

Normal Heavy

12345678900#€\$¢£f¥

Normal Heavy Italic

12345678900#€\$¢£f¥

Numerals matching weights

Tabular figures widths
(in lining or oldstyle versions)
are compatible in many
weight combinations.

Text ExtraLight

12345678900#€\$¢£f¥

Text ExtraLight Italic

12345678900#€\$¢£f¥

Text Light

I2345678900#€\$¢£f¥

Text Light Italic

I2345678900#€\$¢£f¥

Text Regular

12345678900#€\$¢£f¥

Text Italic

12345678900#€\$¢£f¥

Text Demi

I2345678900#€\$¢£f¥

Text Demi Italic

I2345678900#€\$¢£f¥

Text Bold

12345678900#€\$¢£f¥

Text Bold Italic

12345678900#€\$¢£f¥

Text Extrabold

I2345678900#€\$¢£f¥

Text Extrabold Italic

I2345678900#€\$¢£f¥

Text Heavy

12345678900#€\$¢£f¥

Text Heavy Italic

12345678900#€\$¢£f¥

Numerals matching weights

Tabular figures widths
(in lining or oldstyle versions)
are compatible in many
weight combinations.

Display ExtraLight 12345678900#€\$¢£f¥

Display ExtraLight Italic *12345678900#€\$¢£f¥*

Display Light 12345678900#€\$¢£f¥

Display Light Italic *12345678900#€\$¢£f¥*

Display Regular 12345678900#€\$¢£f¥

Display Italic *12345678900#€\$¢£f¥*

Display Demi 12345678900#€\$¢£f¥

Display Demi Italic *12345678900#€\$¢£f¥*

Display Bold 12345678900#€\$¢£f¥

Display Bold Italic *12345678900#€\$¢£f¥*

Display Extrabold **12345678900#€\$¢£f¥**

Display Extrabold Italic ***12345678900#€\$¢£f¥***

Display Heavy **12345678900#€\$¢£f¥**

Display Heavy Italic ***12345678900#€\$¢£f¥***

Numerals matching weights

Tabular figures widths
(in lining or oldstyle versions)
are compatible in many
weight combinations.

Affiche ExtraLight 12345678900#€\$¢£f¥

Affiche ExtraLight Italic *12345678900#€\$¢£f¥*

Affiche Light 12345678900#€\$¢£f¥

Affiche Light Italic *12345678900#€\$¢£f¥*

Affiche Regular 12345678900#€\$¢£f¥

Affiche Italic *12345678900#€\$¢£f¥*

Affiche Demi 12345678900#€\$¢£f¥

Affiche Demi Italic *12345678900#€\$¢£f¥*

Affiche Bold 12345678900#€\$¢£f¥

Affiche Bold Italic *12345678900#€\$¢£f¥*

Affiche Extrabold **12345678900#€\$¢£f¥**

Affiche Extrabold Italic ***12345678900#€\$¢£f¥***

Affiche Heavy **12345678900#€\$¢£f¥**

Affiche Heavy Italic ***12345678900#€\$¢£f¥***

Optical sizes

Example of matching sizes

- ① Arsen Affiche 156 pt
- ② Arsen Display 42 pt
- ③ Arsen Normal 16 pt
- ④ Arsen Text 8 pt

① Aa ② Aa ③ Aa ④ Aa

from 64 pt to infinite
Arsen Affiche

① A H g a

from 24 pt to 96 pt
Arsen Display

② A H g a

from 10 pt to 36 pt
Arsen Normal

③ A H g a

Arsen Text
x-height

from 6 pt to 14 pt
Arsen Text

④ A H g a

Optical sizes

Exemple of matching sizes

- ① Arsen Affiche 156 pt
- ② Arsen Display 42 pt
- ③ Arsen Normal 16 pt
- ④ Arsen Text 8 pt

① *Aa* ② *Aa* ③ *Aa* ④ *Aa*

from 64 pt to infinite
Arsen Affiche

① *AH g'a*

from 24 pt to 96 pt
Arsen Display

② *AH g'a*

from 10 pt to 36 pt
Arsen Normal

③ *AH g'a*

Arsen Text
x-height

from 6 pt to 14 pt
Arsen Text

④ *AH g'a*

68 pt (-10)

Creditworthy

ExtraLight

Grandfathers

Light

Mythological

Regular

Relinquishes

Demi

Kickstarting

Bold

Profitability

ExtraBold

Bourgeoisie

Heavy

68 pt (-10)

Creditworthy

ExtraLight

Grandfathers

Light

Mythological

Regular

Relinquishes

Demi

Kickstarting

Bold

Profitability

ExtraBold

Bourgeoisie

Heavy

68 pt (-10)

INAUGURAL

ExtraLight

DOWNBEAT

Light

SPRINKLED

Regular

PACKAGING

Demi

KINEMATIC

Bold

DOWNSIDE

ExtraBold

EXCHANGE

Heavy

68 pt (-10)

INAUGURAL

ExtraLight

DOWNBEAT

Light

SPRINKLED

Regular

PACKAGING

Demi

KINEMATIC

Bold

DOWNSIDE

ExtraBold

EXCHANGE

Heavy

abcdefghijklmnopqrstuvwxy 0123456789
 ABCDEFGHIJKLMNOPQRSTUVWXYZ &

Thus we have created

40 pt

However, most of the existing types we
 re old-fashioned and not adapted to to
 MORE THAN 489 NEW TYPEFACES

24 pt

In recent years, a new tendency has become manifes
 t in the decorative arts. While the simplicity of the l
 ines has been preserved, the straightness is yielding
 and a distinguished elegance is coming into its ow

18 pt

However, most of the existing types were old-fashioned and not ad
 apted to today's working methods, owing their fragility. A new typ
 eface had to be found with a design that corresponded to today's t
 aste. Thus we have created Arsen, a modern and elegant typeface
 , both practical and robust... In recent years, 6402 new tendency h

14 pt

A new typeface had to be found with a design that corresþonded to today's t
 aste. Thus we have created Arsen, a modern & elegant typeface, both practical
 and robust... In recent years, 6402 new tendencies has become manifest in th
 e decorative arts. While the simplicity of the lines has been preserved, the str
 aightness is yielding and a distinguished elegance is coming into its own agai
 THUS WE HAVE CREATED ARSEN, A MODERN & ELEGANT TYPEFACE,

12 pt

Pro

with a selection of
 OpenType Pro features

10 pt

In recent years, a new tendency has become manifest in the decorative arts. While the simpli
 city of the lines has been preserved, the straightness is yielding and a distinguished elegance
 is coming into its own again. Typography has not been neglected in these developments, whi
 ch have been expressed by an obvious reversion to certain styles. However, most of the existi
 ng types were old-fashioned and not adapted to today's working methods, owing their fragili
 ty. A new typeface had to be found with a design that corresponded to today's taste. Thus we
 have created Arsen, a modern and elegant typeface, both practical and robust... In recent ye
 ars, a new tendency has become manifest in the decorative arts. While the simplicity of the li
 TYPOGRAPHY HAS NOT BEEN NEGLECTED IN THESE DEVELOPMENTS, WHICH HA
 VE BEEN EXPRESSED BY AN OBVIOUS REVERSION TO CERTAIN STYLES. HOWEVER

8 pt – 6 pt

However, most of the existing types were old-fashioned and not adapted to today's working methods, owing the
 ir fragility. A new typeface had to be found with a desig
 n that corresponded to today's taste. Thus we have crea
 ted Arsen, a modern and elegant typeface, both practica
 l and robust... In recent years, a new tendency has beco
 me manifest in the decorative arts. While the simplicity
 of the lines has been preserved, the straightness is yield
 ing and a distinguished elegance is coming into its own

However, most of the existing types were old-fashioned and not adapted t
 o today's working methods, owing their fragility. A new typeface had to be
 found with a design that corresponded to today's taste. Thus we have crea
 ted Arsen, a modern and elegant typeface, both practical and robust... In r
 ecent years, a new tendency has become manifest in the decorative arts. W
 hile the simplicity of the lines has been preserved, the straightness is yield
 ing and a distinguished elegance is coming into its own again. Typograph
 y has not been neglected in these developments, which have been expresse
 d by an obvious reversion to certain styles. However, most of the existing t
 ypes were old-fashioned and not adapted to today's working methods, owi
 ng their fragility. A new typeface had to be found with a design that corres

abcdefghijklmnopqrstuvwxyz 0123456789
 ABCDEFGHIJKLMNOPQRSTUVWXYZ &

Thus we have created

40 pt

However, most of the existing types were old-fashioned and not adapted to today's MORE THAN 489 NEW TYPEFACES H

24 pt

In recent years, a new tendency has become manifest in the decorative arts. While the simplicity of the lines has been preserved, the straightness is yielding and a distinguished elegance is coming into its own again. Typog

18 pt

However, most of the existing types were old-fashioned and not adapted to today's working methods, owing their fragility. A new typeface had to be found with a design that corresponded to today's taste. Thus we have created Arsen, a modern and elegant typeface, both practical and robust... In recent years, 6402 new tendency has become manifest in th

14 pt

A new typeface had to be found with a design that corresponded to today's taste. Thus we have created Arsen, a modern & elegant typeface, both practical and robust... In recent years, 6402 new tendencies has become manifest in the decorative arts. While the simplicity of the lines has been preserved, the straightness is yielding and a distinguished elegance is coming into its own again. Typography has not been neglected in these developments, which have been expressed by an obvious reversion to certain styles. HOWEVER, MOST OF

12 pt

Pro

with a selection of
OpenType Pro features

10 pt

In recent years, a new tendency has become manifest in the decorative arts. While the simplicity of the lines has been preserved, the straightness is yielding and a distinguished elegance is coming into its own again. Typography has not been neglected in these developments, which have been expressed by an obvious reversion to certain styles. However, most of the existing types were old-fashioned and not adapted to today's working methods, owing their fragility. A new typeface had to be found with a design that corresponded to today's taste. Thus we have created Arsen, a modern and elegant typeface, both practical and robust... In recent years, a new tendency has become manifest in the decorative arts. While the simplicity of the lines has been preserved, the straightness is yielding and a distinguished elegance is coming into its own again. TYPOGRAPHY HAS NOT BEEN NEGLECTED IN THESE DEVELOPMENTS, WHICH HAVE BEEN EXPRESSED BY AN OBVIOUS REVERSION TO CERTAIN STYLES. HOWEVER, MOST OF

8 pt – 6 pt

However, most of the existing types were old-fashioned and not adapted to today's working methods, owing their fragility. A new typeface had to be found with a design that corresponded to today's taste. Thus we have created Arsen, a modern and elegant typeface, both practical and robust... In recent years, a new tendency has become manifest in the decorative arts. While the simplicity of the lines has been preserved, the straightness is yielding and a distinguished elegance is coming into its own again. Typography has not been neglected in these developments, which have been expressed by an obvious reversion to certain styles. However, most of the existing types were old-fashioned and not adapted to today's working methods, owing their fragility. A new typeface had to be found with a design that corresponded to today's taste. Therefore we have created Arsen, a modern

However, most of the existing types were old-fashioned and not adapted to today's working methods, owing their fragility. A new typeface had to be found with a design that corresponded to today's taste. Thus we have created Arsen, a modern and elegant typeface, both practical and robust... In recent years, a new tendency has become manifest in the decorative arts. While the simplicity of the lines has been preserved, the straightness is yielding and a distinguished elegance is coming into its own again. Typography has not been neglected in these developments, which have been expressed by an obvious reversion to certain styles. However, most of the existing types were old-fashioned and not adapted to today's working methods, owing their fragility. A new typeface had to be found with a design that corresponded to today's taste. Therefore we have created Arsen, a modern

abcdefghijklmnopqrstuvwxyz 0123456789
 ABCDEFGHIJKLMNOPQRSTUVWXYZ &

Thus we have created

40 pt

However, most of the existing types we re old-fashioned and not adapted to to
 MORE THAN 489 NEW TYPEFACES

24 pt

In recent years, a new tendency has become manife
 st in the decorative arts. While the simplicity of the
 lines has been preserved, the straightness is yieldin
 g and a distinguished elegance is coming into its o

18 pt

However, most of the existing types were old-fashioned and not a
 dapted to today's working methods, owing their fragility. A new ty
 peface had to be found with a design that corresponded to today's
 taste. Thus we have created Arsen, a modern and elegant typeface
 , both practical and robust... In recent years, 6402 new tendency h

14 pt

A new typeface had to be found with a design that corresponded to today's t
 aste. Thus we have created Arsen, a modern & elegant typeface, both practica
 l and robust... In recent years, 6402 new tendencies has become manifest in
 the decorative arts. While the simplicity of the lines has been preserved, the
 straightness is yielding and a distinguished elegance is coming into its own
 THUS WE HAVE CREATED ARSEN, A MODERN & ELEGANT TYPEFACE

12 pt

Pro

with a selection of
 OpenType Pro features

In recent years, a new tendency has become manifest in the decorative arts. While the simpl
 icity of the lines has been preserved, the straightness is yielding and a distinguished elegan
 ce is coming into its own again. Typography has not been neglected in these developments
 , which have been expressed by an obvious reversion to certain styles. However, most of the e
 xisting types were old-fashioned and not adapted to today's working methods, owing their f
 ragility. A new typeface had to be found with a design that corresponded to today's taste. Th
 us we have created Arsen, a modern and elegant typeface, both practical and robust... In rec
 ent years, a new tendency has become manifest in the decorative arts. While the simplicity o
 TYPOGRAPHY HAS NOT BEEN NEGLECTED IN THESE DEVELOPMENTS, WHICH HA
 VE BEEN EXPRESSED BY AN OBVIOUS REVERSION TO CERTAIN STYLES. HOWEVER,

10 pt

However, most of the existing types were old-fashioned and not adapted to today's working methods, owing the
 ir fragility. A new typeface had to be found with a desig
 n that corresponded to today's taste. Thus we have crea
 ted Arsen, a modern and elegant typeface, both practica
 l and robust... In recent years, a new tendency has beco
 me manifest in the decorative arts. While the simplicity
 of the lines has been preserved, the straightness is yield
 ing and a distinguished elegance is coming into its own

8 pt – 6 pt

However, most of the existing types were old-fashioned and not adapted t
 o today's working methods, owing their fragility. A new typeface had to be
 found with a design that corresponded to today's taste. Thus we have crea
 ted Arsen, a modern and elegant typeface, both practical and robust... In r
 ecent years, a new tendency has become manifest in the decorative arts. W
 hile the simplicity of the lines has been preserved, the straightness is yiel
 ding and a distinguished elegance is coming into its own again. Typograp
 hy has not been neglected in these developments, which have been expres
 sed by an obvious reversion to certain styles. However, most of the existin
 g types were old-fashioned and not adapted to today's working methods, o
 wing their fragility. A new typeface had to be found with a design that cor

abcdefghijklmnopqrstu vwxyz 0123456789
 ABCDEFGHIJKLMNOPQRSTU VWXYZ &

40 pt
 Thus we have created

24 pt
 However, most of the existing types were
 old-fashioned and not adapted to today's
 MORE THAN 489 NEW TYPEFACES H

18 pt
 In recent years, a new tendency has become manifest i
 n the decorative arts. While the simplicity of the lines
 has been preserved, the straightness is yielding and a
 distinguished elegance is coming into its own again. T

14 pt
 However, most of the existing types were old-fashioned and not adapt
 ed to today's working methods, owing their fragility. A new typeface h
 ad to be found with a design that corresponded to today's taste. Thus
 we have created Arsen, a modern and elegant typeface, both practical
 and robust... In recent years, 6402 new tendency has become manifes

12 pt
 A new typeface had to be found with a design that corresponded to today's taste
 . Thus we have created Arsen, a modern & elegant typeface, both practical and rob
 ušt... In recent years, 6402 new tendencies has become manifest in the decorative
 arts. While the simplicity of the lines has been preserved, the straightness is yieldi
 ng and a distinguished elegance is coming into its own again. Typography has not
 THUS WE HAVE CREATED ARSEN, A MODERN & ELEGANT TYPEFACE, B

10 pt
 In recent years, a new tendency has become manifest in the decorative arts. While the simplicity of
 the lines has been preserved, the straightness is yielding and a distinguished elegance is coming i
 nto its own again. Typography has not been neglected in these developments, which have been exp
 ressed by an obvious reversion to certain styles. However, most of the existing types were old-fashi
 oned and not adapted to today's working methods, owing their fragility. A new typeface had to be
 found with a design that corresponded to today's taste. Thus we have created Arsen, a modern an
 d elegant typeface, both practical and robust... In recent years, a new tendency has become manif
 est in the decorative arts. While the simplicity of the lines has been preserved, the straightness is y
 TYPOGRAPHY HAS NOT BEEN NEGLECTED IN THESE DEVELOPMENTS, WHICH HAVE B
 EEN EXPRESSED BY AN OBVIOUS REVERSION TO CERTAIN STYLES. HOWEVER, MOST O

8 pt – 6 pt
 However, most of the existing types were old-fashioned and
 not adapted to today's working methods, owing their fragil
 ity. A new typeface had to be found with a design that corr
 esponded to today's taste. Thus we have created Arsen, a m
 odern and elegant typeface, both practical and robust... In
 recent years, a new tendency has become manifest in the de
 corative arts. While the simplicity of the lines has been pre
 served, the straightness is yielding and a distinguished eleg
 ance is coming into its own again. Typography has not bee

However, most of the existing types were old-fashioned and not adapted to tod
 ay's working methods, owing their fragility. A new typeface had to be found wit
 h a design that corresponded to today's taste. Thus we have created Arsen, a m
 odern and elegant typeface, both practical and robust... In recent years, a new
 tendency has become manifest in the decorative arts. While the simplicity of th
 e lines has been preserved, the straightness is yielding and a distinguished ele
 gance is coming into its own again. Typography has not been neglected in thes
 e developments, which have been expressed by an obvious reversion to certain s
 tyles. However, most of the existing types were old-fashioned and not adapted t
 o today's working methods, owing their fragility. A new typeface had to be fou
 nd with a design that corresponded to today's taste. Therefore we have created

abcdefghijklmnopqrstu v wxyz 0123456789
 ABCDEFGHIJKLMNOPQR STUVWXYZ &

Thus we have created

40 pt

However, most of the existing types were old-fashioned and not adapted to today's working methods, owing their fragility. A new typeface had to be found with a design that corresponded to today's taste. Thus we have created Arsen, a modern and elegant typeface, both practical and robust... In recent years, a new tendency has become manifest in the decorative arts. While the simplicity of the lines has been preserved, the straightness is yielding and a distinguished elegance is coming into its own again. Typography has not been neglected in these developments, which have been expressed by an obvious reversion to certain styles. However, most of the existing types were old-fashioned and not adapted to today's working methods, owing their fragility. A new typeface had to be found with a design that corresponded to today's taste. Thus we have created Arsen, a modern & elegant typeface, both practical and robust... In recent years, 6402 new tendencies has become manifest in the decorative arts. While the simplicity of the lines has been preserved, the straightness is yielding and a distinguished elegance is coming into its own again. Typo

24 pt

MORE THAN 489 NEW TYPEFACES

18 pt

In recent years, a new tendency has become manifest in the decorative arts. While the simplicity of the lines has been preserved, the straightness is yielding and a distinguished elegance is coming into its own again. Typo

14 pt

However, most of the existing types were old-fashioned and not adapted to today's working methods, owing their fragility. A new typeface had to be found with a design that corresponded to today's taste. Thus we have created Arsen, a modern and elegant typeface, both practical and robust... In recent years, 6402 new tendencies has become manifest in the decorative arts. While the simplicity of the lines has been preserved, the straightness is yielding and a distinguished elegance is coming into its own again. Typo

12 pt

Pro

with a selection of
OpenType Pro features

A new typeface had to be found with a design that corresponded to today's taste. Thus we have created Arsen, a modern & elegant typeface, both practical and robust... In recent years, 6402 new tendencies has become manifest in the decorative arts. While the simplicity of the lines has been preserved, the straightness is yielding and a distinguished elegance is coming into its own again. Typo

THUS WE HAVE CREATED ARSEN, A MODERN & ELEGANT TYPEFACE

10 pt

In recent years, a new tendency has become manifest in the decorative arts. While the simplicity of the lines has been preserved, the straightness is yielding and a distinguished elegance is coming into its own again. Typography has not been neglected in these developments, which have been expressed by an obvious reversion to certain styles. However, most of the existing types were old-fashioned and not adapted to today's working methods, owing their fragility. A new typeface had to be found with a design that corresponded to today's taste. Thus we have created Arsen, a modern and elegant typeface, both practical and robust... In recent years, a new tendency has become manifest in the decorative arts. While the simplicity of the lines has been preserved, the straightness is yielding and a distinguished elegance is coming into its own again. Typo

TYPOGRAPHY HAS NOT BEEN NEGLECTED IN THESE DEVELOPMENTS, WHICH HAVE BEEN EXPRESSED BY AN OBVIOUS REVERSION TO CERTAIN STYLES. HOWEVER,

8 pt – 6 pt

However, most of the existing types were old-fashioned and not adapted to today's working methods, owing their fragility. A new typeface had to be found with a design that corresponded to today's taste. Thus we have created Arsen, a modern and elegant typeface, both practical and robust... In recent years, a new tendency has become manifest in the decorative arts. While the simplicity of the lines has been preserved, the straightness is yielding and a distinguished elegance is coming into its own again. Typo

However, most of the existing types were old-fashioned and not adapted to today's working methods, owing their fragility. A new typeface had to be found with a design that corresponded to today's taste. Thus we have created Arsen, a modern and elegant typeface, both practical and robust... In recent years, a new tendency has become manifest in the decorative arts. While the simplicity of the lines has been preserved, the straightness is yielding and a distinguished elegance is coming into its own again. Typography has not been neglected in these developments, which have been expressed by an obvious reversion to certain styles. However, most of the existing types were old-fashioned and not adapted to today's working methods, owing their fragility. A new typeface had to be found with a design

abcdefghijklmnopqrstuvwxyz 0123456789
 ABCDEFGHIJKLMNOPQRSTUVWXYZ &

Thus we have created

40 pt

However, most of the existing types were old-fashioned and not adapted to today's MORE THAN 489 NEW TYPEFACES H

24 pt

In recent years, a new tendency has become manifest in the decorative arts. While the simplicity of the lines has been preserved, the straightness is yielding and a distinguished elegance is coming into its own again.

18 pt

However, most of the existing types were old-fashioned and not adapted to today's working methods, owing their fragility. A new typeface had to be found with a design that corresponded to today's taste. Thus we have created Arsen, a modern and elegant typeface, both practical and robust... In recent years, 6402 new tendency has become

14 pt

A new typeface had to be found with a design that corresponded to today's taste. Thus we have created Arsen, a modern & elegant typeface, both practical and robust... In recent years, 6402 new tendencies has become manifest in the decorative arts. While the simplicity of the lines has been preserved, the straightness is yielding and a distinguished elegance is coming into its own again. **TYPOGRAPHY HAS NOT BEEN NEGLECTED IN THESE DEVELOPMENTS, WHICH HAVE BEEN EXPRESSED BY AN OBVIOUS REVERSION TO CERTAIN STYLES. HOWEVER, MOST**

12 pt

Pro

with a selection of
OpenType Pro features

10 pt

In recent years, a new tendency has become manifest in the decorative arts. While the simplicity of the lines has been preserved, the straightness is yielding and a distinguished elegance is coming into its own again. Typography has not been neglected in these developments, which have been expressed by an obvious reversion to certain styles. However, most of the existing types were old-fashioned and not adapted to today's working methods, owing their fragility. A new typeface had to be found with a design that corresponded to today's taste. Thus we have created Arsen, a modern and elegant typeface, both practical and robust... In recent years, a new tendency has become manifest in the decorative arts. While the simplicity of the lines has been preserved, typography has not been neglected in these developments, which have been expressed by an obvious reversion to certain styles. However, most of the existing types were old-fashioned and not adapted to today's working methods, owing their fragility. A new typeface had to be found with a design that corresponded to today's taste. Theref

8 pt – 6 pt

However, most of the existing types were old-fashioned and not adapted to today's working methods, owing their fragility. A new typeface had to be found with a design that corresponded to today's taste. Thus we have created Arsen, a modern and elegant typeface, both practical and robust... In recent years, a new tendency has become manifest in the decorative arts. While the simplicity of the lines has been preserved, the straightness is yielding and a distinguished elegance is coming into its own again. Typograp

However, most of the existing types were old-fashioned and not adapted to today's working methods, owing their fragility. A new typeface had to be found with a design that corresponded to today's taste. Thus we have created Arsen, a modern and elegant typeface, both practical and robust... In recent years, a new tendency has become manifest in the decorative arts. While the simplicity of the lines has been preserved, the straightness is yielding and a distinguished elegance is coming into its own again. Typography has not been neglected in these developments, which have been expressed by an obvious reversion to certain styles. However, most of the existing types were old-fashioned and not adapted to today's working methods, owing their fragility. A new typeface had to be found with a design that corresponded to today's taste. Theref

abcdefghijklmnopqrstuvwxyz 0123456789
 ABCDEFGHIJKLMNOPQRSTUVWXYZ &

Thus we have created

40 pt

However, most of the existing types were old-fashioned and not adapted to
MORE THAN 489 NEW TYPEFACES

24 pt

In recent years, a new tendency has become manifest in the decorative arts. While the simplicity of the lines has been preserved, the straightness is yielding and a distinguished elegance is coming into

18 pt

However, most of the existing types were old-fashioned and not adapted to today's working methods, owing their fragility. A new typeface had to be found with a design that corresponded to today's taste. Thus we have created Arsen, a modern and elegant typeface, both practical and robust... In recent years, 6402 new ten

14 pt

A new typeface had to be found with a design that corresponded to today's taste. Thus we have created Arsen, a modern & elegant typeface, both practical and robust... In recent years, 6402 new tendencies has become manifest in the decorative arts. While the simplicity of the lines has been preserved, the straightness is yielding and a distinguished elegance is coming into it
THUS WE HAVE CREATED ARSEN, A MODERN & ELEGANT TYPEFAC

12 pt

Pro

with a selection of
 OpenType Pro features

10 pt

In recent years, a new tendency has become manifest in the decorative arts. While the simplicity of the lines has been preserved, the straightness is yielding and a distinguished elegance is coming into its own again. Typography has not been neglected in these developments, which have been expressed by an obvious reversion to certain styles. However, most of the existing types were old-fashioned and not adapted to today's working methods, owing their fragility. A new typeface had to be found with a design that corresponded to today's taste. Thus we have created Arsen, a modern and elegant typeface, both practical and robust... In recent years, a new tendency has become manifest in the decorative arts. While **TYPOGRAPHY HAS NOT BEEN NEGLECTED IN THESE DEVELOPMENTS, WHICH HAVE BEEN EXPRESSED BY AN OBVIOUS REVERSION TO CERTAIN STYLES. HOWEV**

8 pt – 6 pt

However, most of the existing types were old-fashioned and not adapted to today's working methods, owing their fragility. A new typeface had to be found with a design that corresponded to today's taste. Thus we have created Arsen, a modern and elegant typeface, both practical and robust... In recent years, a new tendency has become manifest in the decorative arts. While the simplicity of the lines has been preserved, the straightness is yielding and a distinguished elegance is coming

However, most of the existing types were old-fashioned and not adapted to today's working methods, owing their fragility. A new typeface had to be found with a design that corresponded to today's taste. Thus we have created Arsen, a modern and elegant typeface, both practical and robust... In recent years, a new tendency has become manifest in the decorative arts. While the simplicity of the lines has been preserved, the straightness is yielding and a distinguished elegance is coming into its own again. Typography has not been neglected in these developments, which have been expressed by an obvious reversion to certain styles. However, most of the existing types were old-fashioned and not adapted to today's working methods, owing their fragility. A new typeface had to be found with

abcdefghijklmnopqrstu vwxyz 0123456789
 ABCDEFGHIJKLMNOPQRSTU VWXYZ &

Thus we have created

However, most of the existing types we
 re old-fashioned and not adapted to to
 MORE THAN 489 NEW TYPEFACES H

In recent years, a new tendency has become manifest
 in the decorative arts. While the simplicity of the lin
 es has been preserved, the straightness is yielding a
 nd a distinguished elegance is coming into its own a

However, most of the existing types were old-fashioned and not ada
 pted to today's working methods, owing their fragility. A new typef
 ace had to be found with a design that corresponded to today's tas
 te. Thus we have created Arsen, a modern and elegant typeface, bot
 h practical and robust... In recent years, 6402 new tendency has b

A new typeface had to be found with a design that corresponded to today's tast
 e. Thus we have created Arsen, a modern & elegant typeface, both practical and
 robust... In recent years, 6402 new tendencies has become manifest in the dec
 orative arts. While the simplicity of the lines has been preserved, the straightn
 ess is yielding and a distinguished elegance is coming into its own again. Typo
 THUS WE HAVE CREATED ARSEN, A MODERN & ELEGANT TYPEFACE, B

In recent years, a new tendency has become manifest in the decorative arts. While the simplicit
 y of the lines has been preserved, the straightness is yielding and a distinguished elegance is c
 oming into its own again. Typography has not been neglected in these developments, which ha
 ve been expressed by an obvious reversion to certain styles. However, most of the existing types
 were old-fashioned and not adapted to today's working methods, owing their fragility. A new t
 ypeface had to be found with a design that corresponded to today's taste. Thus we have create
 d Arsen, a modern and elegant typeface, both practical and robust... In recent years, a new ten
 dency has become manifest in the decorative arts. While the simplicity of the lines has been p
 TYPOGRAPHY HAS NOT BEEN NEGLECTED IN THESE DEVELOPMENTS, WHICH HAVE
 BEEN EXPRESSED BY AN OBVIOUS REVERSION TO CERTAIN STYLES. HOWEVER, MOST

However, most of the existing types were old-fashioned a
 nd not adapted to today's working methods, owing thei
 r fragility. A new typeface had to be found with a design
 that corresponded to today's taste. Thus we have create
 d Arsen, a modern and elegant typeface, both practical a
 nd robust... In recent years, a new tendency has become
 manifest in the decorative arts. While the simplicity of th
 e lines has been preserved, the straightness is yielding a
 nd a distinguished elegance is coming into its own agai

However, most of the existing types were old-fashioned and not adapted to t
 oday's working methods, owing their fragility. A new typeface had to be fou
 nd with a design that corresponded to today's taste. Thus we have created
 Arsen, a modern and elegant typeface, both practical and robust... In recen
 t years, a new tendency has become manifest in the decorative arts. While t
 he simplicity of the lines has been preserved, the straightness is yielding an
 d a distinguished elegance is coming into its own again. Typography has n
 ot been neglected in these developments, which have been expressed by an o
 bvious reversion to certain styles. However, most of the existing types were o
 ld-fashioned and not adapted to today's working methods, owing their frag
 ility. A new typeface had to be found with a design that corresponded to

40 pt

24 pt

18 pt

14 pt

12 pt

Pro

with a selection of
 OpenType Pro features

10 pt

8 pt – 6 pt

abcdefghijklmnopqrstu vwxyz 0123456789
 ABCDEFGHIJKLMNOPQRSTU VWXYZ &

40 pt
 Thus we have created

24 pt
 However, most of the existing types were old-fashioned and not adapted to
 MORE THAN 489 NEW TYPEFACES

18 pt
 In recent years, a new tendency has become manifest in the decorative arts. While the simplicity of the lines has been preserved, the straightness is yielding and a distinguished elegance is coming in

14 pt
 However, most of the existing types were old-fashioned and not adapted to today's working methods, owing their fragility. A new typeface had to be found with a design that corresponded to today's taste. Thus we have created Arsen, a modern and elegant typeface, both practical and robust... In recent years, 6402 ne

12 pt
 A new typeface had to be found with a design that corresponded to today's taste. Thus we have created Arsen, a modern & elegant typeface, both practical and robust... In recent years, 6402 new tendencies has become manifest in the decorative arts. While the simplicity of the lines has been preserved, the straightness is yielding and a distinguished elegance is coming in
 THUS WE HAVE CREATED ARSEN, A MODERN & ELEGANT TYPEFA

10 pt
 In recent years, a new tendency has become manifest in the decorative arts. While the simplicity of the lines has been preserved, the straightness is yielding and a distinguished elegance is coming into its own again. Typography has not been neglected in these developments, which have been expressed by an obvious reversion to certain styles. However, most of the existing types were old-fashioned and not adapted to today's working methods, owing their fragility. A new typeface had to be found with a design that corresponded to today's taste. Thus we have created Arsen, a modern and elegant typeface, both practical and robust... In recent years, a new tendency has become manifest in the decorative arts. While the simplicity of the lines has been preserved, the straightness is yielding and a distinguished elegance is coming into its own again. Typography has not been neglected in these developments, which have been expressed by an obvious reversion to certain styles. However, most of the existing types were old-fashioned and not adapted to today's working methods, owing their fragility. A new typeface h

8 pt – 6 pt
 However, most of the existing types were old-fashioned and not adapted to today's working methods, owing their fragility. A new typeface had to be found with a design that corresponded to today's taste. Thus we have created Arsen, a modern and elegant typeface, both practical and robust... In recent years, a new tendency has become manifest in the decorative arts. While the simplicity of the lines has been preserved, the straightness is yielding and a distinguished elegance is

However, most of the existing types were old-fashioned and not adapted to today's working methods, owing their fragility. A new typeface had to be found with a design that corresponded to today's taste. Thus we have created Arsen, a modern and elegant typeface, both practical and robust... In recent years, a new tendency has become manifest in the decorative arts. While the simplicity of the lines has been preserved, the straightness is yielding and a distinguished elegance is coming into its own again. Typography has not been neglected in these developments, which have been expressed by an obvious reversion to certain styles. However, most of the existing types were old-fashioned and not adapted to today's working methods, owing their fragility. A new typeface h

Pro

with a selection of
 OpenType Pro features

abcdefghijklmnopqrstu vwxyz 0123456789
 ABCDEFGHIJKLMNOPQRSTU VWXYZ &

40 pt
 Thus we have created

24 pt
 However, most of the existing types we
 re old-fashioned and not adapted to t
 MORE THAN 489 NEW TYPEFACES H

18 pt
 In recent years, a new tendency has become manife
 st in the decorative arts. While the simplicity of th
 e lines has been preserved, the straightness is yield
 ing and a distinguished elegance is coming into it

14 pt
 However, most of the existing types were old-fashioned and not a
 dapted to today's working methods, owing their fragility. A new t
 ypeface had to be found with a design that corresponded to today
 's taste. Thus we have created Arsen, a modern and elegant typefa
 ce, both practical and robust... In recent years, 6402 new tendenc

12 pt
 A new typeface had to be found with a design that corresponded to today's t
 aste. Thus we have created Arsen, a modern & elegant typeface, both practica
 l and robust... In recent years, 6402 new tendencies has become manifest in
 the decorative arts. While the simplicity of the lines has been preserved, the
 straightness is yielding and a distinguished elegance is coming into its own
 THUS WE HAVE CREATED ARSEN, A MODERN & ELEGANT TYPEFACE, B

Pro

with a selection of
 OpenType Pro features

10 pt
 In recent years, a new tendency has become manifest in the decorative arts. While the simp
 licity of the lines has been preserved, the straightness is yielding and a distinguished elega
 nce is coming into its own again. Typography has not been neglected in these developments
 , which have been expressed by an obvious reversion to certain styles. However, most of the e
 xisting types were old-fashioned and not adapted to today's working methods, owing their f
 ragility. A new typeface had to be found with a design that corresponded to today's taste. T
 hus we have created Arsen, a modern and elegant typeface, both practical and robust... In r
 ecent years, a new tendency has become manifest in the decorative arts. While the simplicity
 TYPOGRAPHY HAS NOT BEEN NEGLECTED IN THESE DEVELOPMENTS, WHICH HAVE
 BEEN EXPRESSED BY AN OBVIOUS REVERSION TO CERTAIN STYLES. HOWEVER, MOS

8 pt – 6 pt
 However, most of the existing types were old-fashioned and not adapted to today's working methods, owing th
 eir fragility. A new typeface had to be found with a desi
 gn that corresponded to today's taste. Thus we have cre
 ated Arsen, a modern and elegant typeface, both practi
 cal and robust... In recent years, a new tendency has b
 ecome manifest in the decorative arts. While the simpli
 city of the lines has been preserved, the straightness is
 yielding and a distinguished elegance is coming into i

However, most of the existing types were old-fashioned and not adapted t
 o today's working methods, owing their fragility. A new typeface had to be
 found with a design that corresponded to today's taste. Thus we have cre
 ated Arsen, a modern and elegant typeface, both practical and robust... I
 n recent years, a new tendency has become manifest in the decorative arts
 . While the simplicity of the lines has been preserved, the straightness is y
 ielding and a distinguished elegance is coming into its own again. Typog
 raphy has not been neglected in these developments, which have been exp
 ressed by an obvious reversion to certain styles. However, most of the exist
 ing types were old-fashioned and not adapted to today's working method
 s, owing their fragility. A new typeface had to be found with a design that

abcdefghijklmnopqrstuvwxyZ 0123456789
 ABCDEFGHIJKLMNOPQRSTUVWXYZ &

40 pt
 Thus we have created

24 pt
 However, most of the existing types
 were old-fashioned and not adapted
 MORE THAN 489 NEW TYPEFAC

18 pt
 In recent years, a new tendency has become ma
 nifest in the decorative arts. While the simplicit
 y of the lines has been preserved, the straightne
 ss is yielding and a distinguished elegance is co

14 pt
 However, most of the existing types were old-fashioned and n
 ot adapted to today's working methods, owing their fragility
 . A new typeface had to be found with a design that correspon
 ded to today's taste. Thus we have created Arsen, a modern an
 d elegant typeface, both practical and robust... In recent year

12 pt
 A new typeface had to be found with a design that corresponded to tod
 ay's taste. Thus we have created Arsen, a modern & elegant typeface, bot
 h practical and robust... In recent years, 6402 new tendencies has beco
 me manifest in the decorative arts. While the simplicity of the lines has
 been preserved, the straightness is yielding and a distinguished eleganc
 THUS WE HAVE CREATED ARSEN, A MODERN & ELEGANT TYPEFA

10 pt
 In recent years, a new tendency has become manifest in the decorative arts. While the
 simplicity of the lines has been preserved, the straightness is yielding and a distingui
 shed elegance is coming into its own again. Typography has not been neglected in the
 se developments, which have been expressed by an obvious reversion to certain styles
 . However, most of the existing types were old-fashioned and not adapted to today's wo
 rking methods, owing their fragility. A new typeface had to be found with a design th
 at corresponded to today's taste. Thus we have created Arsen, a modern and elegant t
 ypeface, both practical and robust... In recent years, a new tendency has become mani
 TYPOGRAPHY HAS NOT BEEN NEGLECTED IN THESE DEVELOPMENTS, WHICH
 HAVE BEEN EXPRESSED BY AN OBVIOUS REVERSION TO CERTAIN STYLES. HO

8 pt – 6 pt
 However, most of the existing types were old-fashion
 ed and not adapted to today's working methods, ow
 ing their fragility. A new typeface had to be found w
 ith a design that corresponded to today's taste. Thu
 s we have created Arsen, a modern and elegant type
 face, both practical and robust... In recent years, a
 new tendency has become manifest in the decorative
 arts. While the simplicity of the lines has been prese
 rved, the straightness is yielding and a distinguishe

However, most of the existing types were old-fashioned and not adapt
 ed to today's working methods, owing their fragility. A new typeface h
 ad to be found with a design that corresponded to today's taste. Thus
 we have created Arsen, a modern and elegant typeface, both practical
 and robust... In recent years, a new tendency has become manifest in
 the decorative arts. While the simplicity of the lines has been preserv
 ed, the straightness is yielding and a distinguished elegance is comin
 g into its own again. Typography has not been neglected in these dev
 elopments, which have been expressed by an obvious reversion to cert
 ain styles. However, most of the existing types were old-fashioned and
 not adapted to today's working methods, owing their fragility. A new

abcdefghijklmnopqrstuvwxyz 0123456789
 ABCDEFGHIJKLMNOPQRSTUVWXYZ &

Thus we have created

**However, most of the existing types were old-fashioned and not adapted to
 MORE THAN 489 NEW TYPEFACES**

In recent years, a new tendency has become manifest in the decorative arts. While the simplicity of the lines has been preserved, the straightness is yielding and a distinguished elegance is coming

However, most of the existing types were old-fashioned and not adapted to today's working methods, owing their fragility. A new typeface had to be found with a design that corresponded to today's taste. Thus we have created Arsen, a modern and elegant typeface, both practical and robust... In recent years, 6402

**A new typeface had to be found with a design that corresponded to today's taste. Thus we have created Arsen, a modern & elegant typeface, both practical and robust... In recent years, 6402 new tendencies has become manifest in the decorative arts. While the simplicity of the lines has been preserved, the straightness is yielding and a distinguished elegance is coming
 THUS WE HAVE CREATED ARSEN, A MODERN & ELEGANT TYPEFACE**

In recent years, a new tendency has become manifest in the decorative arts. While the simplicity of the lines has been preserved, the straightness is yielding and a distinguished elegance is coming into its own again. Typography has not been neglected in these developments, which have been expressed by an obvious reversion to certain styles. However, most of the existing types were old-fashioned and not adapted to today's working methods, owing their fragility. A new typeface had to be found with a design that corresponded to today's taste. Thus we have created Arsen, a modern and elegant typeface, both practical and robust... In recent years, a new tendency has become manifest in the decorative arts. While the simplicity of the lines has been preserved, the straightness is yielding and a distinguished elegance is coming into its own again. Typography has not been neglected in these developments, which have been expressed by an obvious reversion to certain styles. However, most of the existing types were old-fashioned and not adapted to today's working methods, owing their fragility. A new typeface

However, most of the existing types were old-fashioned and not adapted to today's working methods, owing their fragility. A new typeface had to be found with a design that corresponded to today's taste. Thus we have created Arsen, a modern and elegant typeface, both practical and robust... In recent years, a new tendency has become manifest in the decorative arts. While the simplicity of the lines has been preserved, the straightness is yielding and a distinguished elegance

However, most of the existing types were old-fashioned and not adapted to today's working methods, owing their fragility. A new typeface had to be found with a design that corresponded to today's taste. Thus we have created Arsen, a modern and elegant typeface, both practical and robust... In recent years, a new tendency has become manifest in the decorative arts. While the simplicity of the lines has been preserved, the straightness is yielding and a distinguished elegance is coming into its own again. Typography has not been neglected in these developments, which have been expressed by an obvious reversion to certain styles. However, most of the existing types were old-fashioned and not adapted to today's working methods, owing their fragility. A new typeface

40 pt

24 pt

18 pt

14 pt

12 pt

Pro

with a selection of
OpenType Pro features

10 pt

8 pt – 6 pt

abcdefghijklmnopqrstuvwxyz 0123456789
 ABCDEFGHIJKLMNOPQRSTUVWXYZ &

40 pt
Thus we have created

24 pt
**However, most of the existing types
 were old-fashioned and not adapte
 MORE THAN 489 NEW TYPEFAC**

18 pt
**In recent years, a new tendency has become ma
 nifest in the decorative arts. While the simplici
 ty of the lines has been preserved, the straightn
 ess is yielding and a distinguished elegance is c**

14 pt
**However, most of the existing types were old-fashioned and n
 ot adapted to today's working methods, owing their fragility
 . A new typeface had to be found with a design that correspo
 nded to today's taste. Thus we have created Arsen, a modern
 and elegant typeface, both practical and robust... In recent y**

12 pt
**A new typeface had to be found with a design that corresponded to t
 oday's taste. Thus we have created Arsen, a modern & elegant typefac
 e, both practical and robust... In recent years, 6402 new tendencies ha
 s become manifest in the decorative arts. While the simplicity of the li
 nes has been preserved, the straightness is yielding and a distinguishe
 THUS WE HAVE CREATED ARSEN, A MODERN & ELEGANT TYPEF**

10 pt
**In recent years, a new tendency has become manifest in the decorative arts. While th
 e simplicity of the lines has been preserved, the straightness is yielding and a disting
 uished elegance is coming into its own again. Typography has not been neglected in
 these developments, which have been expressed by an obvious reversion to certain s
 tyles. However, most of the existing types were old-fashioned and not adapted to tod
 ay's working methods, owing their fragility. A new typeface had to be found with a d
 esign that corresponded to today's taste. Thus we have created Arsen, a modern and
 elegant typeface, both practical and robust... In recent years, a new tendency has be
 TYPOGRAPHY HAS NOT BEEN NEGLECTED IN THESE DEVELOPMENTS, WHIC
 H HAVE BEEN EXPRESSED BY AN OBVIOUS REVERSION TO CERTAIN STYLES**

8 pt – 6 pt
**However, most of the existing types were old-fashio
 ned and not adapted to today's working methods, o
 wing their fragility. A new typeface had to be found
 with a design that corresponded to today's taste. T
 hus we have created Arsen, a modern and elegant t
 ypeface, both practical and robust... In recent year
 s, a new tendency has become manifest in the decor
 ative arts. While the simplicity of the lines has been
 preserved, the straightness is yielding and a distin**

**However, most of the existing types were old-fashioned and not ada
 pted to today's working methods, owing their fragility. A new typef
 ace had to be found with a design that corresponded to today's tas
 te. Thus we have created Arsen, a modern and elegant typeface, bot
 h practical and robust... In recent years, a new tendency has becom
 e manifest in the decorative arts. While the simplicity of the lines ha
 s been preserved, the straightness is yielding and a distinguished e
 legance is coming into its own again. Typography has not been negl
 ected in these developments, which have been expressed by an obvio
 us reversion to certain styles. However, most of the existing types we
 re old-fashioned and not adapted to today's working methods, owin**

abcdefghijklmnopqrstuvwxyz 0123456789
 ABCDEFGHIJKLMNOPQRSTUVWXYZ &

Thus we have created

**However, most of the existing types were old-fashioned and not adapted
 MORE THAN 489 NEW TYPEFACES**

In recent years, a new tendency has become manifest in the decorative arts. While the simplicity of the lines has been preserved, the straightness is yielding and a distinguished elegance is

However, most of the existing types were old-fashioned and not adapted to today's working methods, owing their fragility. A new typeface had to be found with a design that corresponded to today's taste. Thus we have created Arsen, a modern and elegant typeface, both practical and robust... In recent years,

**A new typeface had to be found with a design that corresponded to today's taste. Thus we have created Arsen, a modern & elegant typeface, both practical and robust... In recent years, 6402 new tendencies has become manifest in the decorative arts. While the simplicity of the lines has been preserved, the straightness is yielding and a distinguished elegance
 THUS WE HAVE CREATED ARSEN, A MODERN & ELEGANT TYPEFACE**

In recent years, a new tendency has become manifest in the decorative arts. While the simplicity of the lines has been preserved, the straightness is yielding and a distinguished elegance is coming into its own again. Typography has not been neglected in these developments, which have been expressed by an obvious reversion to certain styles. However, most of the existing types were old-fashioned and not adapted to today's working methods, owing their fragility. A new typeface had to be found with a design that corresponded to today's taste. Thus we have created Arsen, a modern and elegant typeface, both practical and robust... In recent years, a new tendency has become manifest in the decorative arts. While the simplicity of the lines has been preserved, the straightness is yielding and a distinguished elegance is coming into its own again. Typography has not been neglected in these developments, which have been expressed by an obvious reversion to certain styles. However, most of the existing types were old-fashioned and not adapted to today's working methods, owing their fragility.

However, most of the existing types were old-fashioned and not adapted to today's working methods, owing their fragility. A new typeface had to be found with a design that corresponded to today's taste. Thus we have created Arsen, a modern and elegant typeface, both practical and robust... In recent years, a new tendency has become manifest in the decorative arts. While the simplicity of the lines has been preserved, the straightness is yielding and a distinguished elegance is coming into its own again. Typography has not been neglected in these developments, which have been expressed by an obvious reversion to certain styles. However, most of the existing types were old-fashioned and not adapted to today's working methods, owing their fragility.

However, most of the existing types were old-fashioned and not adapted to today's working methods, owing their fragility. A new typeface had to be found with a design that corresponded to today's taste. Thus we have created Arsen, a modern and elegant typeface, both practical and robust... In recent years, a new tendency has become manifest in the decorative arts. While the simplicity of the lines has been preserved, the straightness is yielding and a distinguished elegance is coming into its own again. Typography has not been neglected in these developments, which have been expressed by an obvious reversion to certain styles. However, most of the existing types were old-fashioned and not adapted to today's working methods, owing their fragility.

40 pt

24 pt

18 pt

14 pt

12 pt

Pro

with a selection of
 OpenType Pro features

10 pt

8 pt – 6 pt

68 pt (-10)

Creditworthy

ExtraLight

Grandfathers

Light

Mythological

Regular

Relinquishes

Demi

Kickstarting

Bold

Profitability

ExtraBold

Bourgeoisie

Heavy

68 pt (-10)

Creditworthy

ExtraLight

Grandfathers

Light

Mythological

Regular

Relinquishes

Demi

Kickstarting

Bold

Profitability

ExtraBold

Bourgeoisie

Heavy

68 pt (-10)

INAUGURAL

ExtraLight

DOWNBEAT

Light

SPRINKLED

Regular

PACKAGING

Demi

KINEMATIC

Bold

DOWNSIDE

ExtraBold

EXCHANGE

Heavy

68 pt (-10)

INAUGURAL

ExtraLight

DOWNBEAT

Light

SPRINKLED

Regular

PACKAGING

Demi

KINEMATIC

Bold

DOWNSIDE

ExtraBold

EXCHANGE

Heavy

abcdefghijklmnopqrstu vwxyz 0123456789
 ABCDEFGHIJKLMNOPQRSTU VWXYZ &

Thus we have created

40 pt

However, most of the existing types were old-fashioned and not adapted to t
 MORE THAN 489 NEW TYPEFACES

24 pt

In recent years, a new tendency has become manif
 est in the decorative arts. While the simplicity of t
 he lines has been preserved, the straightness is yie
 lding and a distinguished elegance is coming into i

18 pt

However, most of the existing types were old-fashioned and not
 adapted to today's working methods, owing their fragility. A new
 typeface had to be found with a design that corresponded to tod
 ay's taste. Thus we have created Arsen, a modern and elegant typ
 eface, both practical and robust... In recent years, 6402 new tend

14 pt

A new typeface had to be found with a design that corresponded to today's
 taste. Thus we have created Arsen, a modern & elegant typeface, both practi
 cal and robust... In recent years, 6402 new tendencies has become manif
 est in the decorative arts. While the simplicity of the lines has been preserve
 d, the straightness is yielding and a distinguished elegance is coming into i
 THUS WE HAVE CREATED ARSEN, A MODERN & ELEGANT TYPEFACE

12 pt

Pro

with a selection of
 OpenType Pro features

10 pt

In recent years, a new tendency has become manifest in the decorative arts. While the sim
 plicity of the lines has been preserved, the straightness is yielding and a distinguished ele
 gance is coming into its own again. Typography has not been neglected in these developm
 ents, which have been expressed by an obvious reversion to certain styles. However, most
 of the existing types were old-fashioned and not adapted to today's working methods, owi
 ng their fragility. A new typeface had to be found with a design that corresponded to toda
 y's taste. Thus we have created Arsen, a modern and elegant typeface, both practical and r
 obust... In recent years, a new tendency has become manifest in the decorative arts. While
 TYPOGRAPHY HAS NOT BEEN NEGLECTED IN THESE DEVELOPMENTS, WHICH HA
 VE BEEN EXPRESSED BY AN OBVIOUS REVERSION TO CERTAIN STYLES. HOWEVE

8 pt – 6 pt

However, most of the existing types were old-fashion
 ed and not adapted to today's working methods, owin
 g their fragility. A new typeface had to be found with
 a design that corresponded to today's taste. Thus we h
 ave created Arsen, a modern and elegant typeface, bot
 h practical and robust... In recent years, a new tenden
 cy has become manifest in the decorative arts. While t
 he simplicity of the lines has been preserved, the stra
 ightness is yielding and a distinguished elegance is co

However, most of the existing types were old-fashioned and not adapte
 d to today's working methods, owing their fragility. A new typeface had t
 o be found with a design that corresponded to today's taste. Thus we ha
 ve created Arsen, a modern and elegant typeface, both practical and robu
 st... In recent years, a new tendency has become manifest in the decorat
 ive arts. While the simplicity of the lines has been preserved, the straigh
 tness is yielding and a distinguished elegance is coming into its own aga
 in. Typography has not been neglected in these developments, which hav
 e been expressed by an obvious reversion to certain styles. However, mos
 t of the existing types were old-fashioned and not adapted to today's wo
 rking methods, owing their fragility. A new typeface had to be found wit

abcdefghijklmnopqrstuvwxyz 0123456789
 ABCDEFGHIJKLMNOPQRSTUVWXYZ &

40 pt
 Thus we have created

24 pt
 However, most of the existing types were old-fashioned and not adapted to today's working methods, owing their fragility. A new typeface had to be found with a design that corresponded to today's taste. Thus we have created Arsen, a modern and elegant typeface, both practical and robust... In recent years, 6402 new tendencies has become manifest in the decorative arts. While the simplicity of the lines has been preserved, the straightness is yielding and a distinguished elegance is coming into its own again. TYPOGRAPHY HAS NOT BEEN NEGLECTED IN THESE DEVELOPMENTS, WHICH HAVE BEEN EXPRESSED BY AN OBVIOUS REVERSION TO CERTAIN STYLES. HOWEVER, MOST

18 pt
 In recent years, a new tendency has become manifest in the decorative arts. While the simplicity of the lines has been preserved, the straightness is yielding and a distinguished elegance is coming into its own again.

14 pt
 However, most of the existing types were old-fashioned and not adapted to today's working methods, owing their fragility. A new typeface had to be found with a design that corresponded to today's taste. Thus we have created Arsen, a modern and elegant typeface, both practical and robust... In recent years, 6402 new tendency has become ma

12 pt
 A new typeface had to be found with a design that corresponded to today's taste. Thus we have created Arsen, a modern & elegant typeface, both practical and robust... In recent years, 6402 new tendencies has become manifest in the decorative arts. While the simplicity of the lines has been preserved, the straightness is yielding and a distinguished elegance is coming into its own again. Typography has not been neglected in these developments, which have been expressed by an obvious reversion to certain styles. However, most of the existing types were old-fashioned and not adapted to today's working methods, owing their fragility. A new typeface had to be found with a design that corresponded to today's taste. Thus we have created Arsen, a modern and elegant typeface, both practical and robust... In recent years, a new tendency has become manifest in the decorative arts. While the simplicity of the lines has been preserved, the straightness is yielding and a distinguished elegance is coming into its own again. **THUS WE HAVE CREATED ARSEN, A MODERN & ELEGANT TYPEFACE, B**

10 pt
 In recent years, a new tendency has become manifest in the decorative arts. While the simplicity of the lines has been preserved, the straightness is yielding and a distinguished elegance is coming into its own again. Typography has not been neglected in these developments, which have been expressed by an obvious reversion to certain styles. However, most of the existing types were old-fashioned and not adapted to today's working methods, owing their fragility. A new typeface had to be found with a design that corresponded to today's taste. Thus we have created Arsen, a modern and elegant typeface, both practical and robust... In recent years, a new tendency has become manifest in the decorative arts. While the simplicity of the lines has been preserved, the straightness is yielding and a distinguished elegance is coming into its own again. **TYPOGRAPHY HAS NOT BEEN NEGLECTED IN THESE DEVELOPMENTS, WHICH HAVE BEEN EXPRESSED BY AN OBVIOUS REVERSION TO CERTAIN STYLES. HOWEVER, MOST**

8 pt – 6 pt
 However, most of the existing types were old-fashioned and not adapted to today's working methods, owing their fragility. A new typeface had to be found with a design that corresponded to today's taste. Thus we have created Arsen, a modern and elegant typeface, both practical and robust... In recent years, a new tendency has become manifest in the decorative arts. While the simplicity of the lines has been preserved, the straightness is yielding and a distinguished elegance is coming into its own again. Typograph

However, most of the existing types were old-fashioned and not adapted to today's working methods, owing their fragility. A new typeface had to be found with a design that corresponded to today's taste. Thus we have created Arsen, a modern and elegant typeface, both practical and robust... In recent years, a new tendency has become manifest in the decorative arts. While the simplicity of the lines has been preserved, the straightness is yielding and a distinguished elegance is coming into its own again. Typography has not been neglected in these developments, which have been expressed by an obvious reversion to certain styles. However, most of the existing types were old-fashioned and not adapted to today's working methods, owing their fragility. A new typeface had to be found with a design that corresponded to today's taste. Therefore w

abcdefghijklmnopqrstu vwxyz 0123456789
 ABCDEFGHIJKLMNOPQRSTU VWXYZ &

Thus we have created

40 pt

However, most of the existing types were old-fashioned and not adapted to
 MORE THAN 489 NEW TYPEFACES

24 pt

In recent years, a new tendency has become manifest in the decorative arts. While the simplicity of the lines has been preserved, the straightness is yielding and a distinguished elegance is coming in

18 pt

However, most of the existing types were old-fashioned and not adapted to today's working methods, owing their fragility. A new typeface had to be found with a design that corresponded to today's taste. Thus we have created Arsen, a modern and elegant typeface, both practical and robust... In recent years, 6402 new t

14 pt

A new typeface had to be found with a design that corresponded to today's taste. Thus we have created Arsen, a modern & elegant typeface, both practical and robust... In recent years, 6402 new tendencies has become manifest in the decorative arts. While the simplicity of the lines has been preserved, the straightness is yielding and a distinguished elegance is coming in
 THUS WE HAVE CREATED ARSEN, A MODERN & ELEGANT TYPEFAC

12 pt

Pro

with a selection of
 OpenType Pro features

In recent years, a new tendency has become manifest in the decorative arts. While the simplicity of the lines has been preserved, the straightness is yielding and a distinguished elegance is coming into its own again. Typography has not been neglected in these developments, which have been expressed by an obvious reversion to certain styles. However, most of the existing types were old-fashioned and not adapted to today's working methods, owing their fragility. A new typeface had to be found with a design that corresponded to today's taste. Thus we have created Arsen, a modern and elegant typeface, both practical and robust... In recent years, a new tendency has become manifest in the decorative arts
 TYPOGRAPHY HAS NOT BEEN NEGLECTED IN THESE DEVELOPMENTS, WHICH HAVE BEEN EXPRESSED BY AN OBVIOUS REVERSION TO CERTAIN STYLES. HOWEV

10 pt

However, most of the existing types were old-fashioned and not adapted to today's working methods, owing their fragility. A new typeface had to be found with a design that corresponded to today's taste. Thus we have created Arsen, a modern and elegant typeface, both practical and robust... In recent years, a new tendency has become manifest in the decorative arts. While the simplicity of the lines has been preserved, the straightness is yielding and a distinguished elegance is co

8 pt – 6 pt

However, most of the existing types were old-fashioned and not adapted to today's working methods, owing their fragility. A new typeface had to be found with a design that corresponded to today's taste. Thus we have created Arsen, a modern and elegant typeface, both practical and robust... In recent years, a new tendency has become manifest in the decorative arts. While the simplicity of the lines has been preserved, the straightness is yielding and a distinguished elegance is coming into its own again. Typography has not been neglected in these developments, which have been expressed by an obvious reversion to certain styles. However, most of the existing types were old-fashioned and not adapted to today's working methods, owing their fragility. A new typeface had to be found w

abcdefghijklmnopqrstu vwxyz 0123456789
 ABCDEFGHIJKLMNOPQRSTUVWXYZ &

40 pt
 Thus we have created

24 pt
 However, most of the existing types were old-fashioned and not adapted to today's working methods, owing their fragility. A new typeface had to be found with a design that corresponded to today's taste. Thus we have created Arsen, a modern and elegant typeface, both practical and robust... In recent years, 6402 new tendencies has become manifest in the decorative arts. While the simplicity of the lines has been preserved, the straightness is yielding and a distinguished elegance is coming into its own again.

18 pt
 In recent years, a new tendency has become manifest in the decorative arts. While the simplicity of the lines has been preserved, the straightness is yielding and a distinguished elegance is coming into its own again.

14 pt
 However, most of the existing types were old-fashioned and not adapted to today's working methods, owing their fragility. A new typeface had to be found with a design that corresponded to today's taste. Thus we have created Arsen, a modern and elegant typeface, both practical and robust... In recent years, 6402 new tendencies has become manifest in the decorative arts. While the simplicity of the lines has been preserved, the straightness is yielding and a distinguished elegance is coming into its own again.

12 pt
Pro
 with a selection of OpenType Pro features
 A new typeface had to be found with a design that corresponded to today's taste. Thus we have created Arsen, a modern & elegant typeface, both practical and robust... In recent years, 6402 new tendencies has become manifest in the decorative arts. While the simplicity of the lines has been preserved, the straightness is yielding and a distinguished elegance is coming into its own again. Typography has not been neglected in these developments, which have been expressed by an obvious reversion to certain styles. However, most of the existing types were old-fashioned and not adapted to today's working methods, owing their fragility. A new typeface had to be found with a design that corresponded to today's taste. Thus we have created Arsen, a modern and elegant typeface, both practical and robust... In recent years, a new tendency has become manifest in the decorative arts. While the simplicity of the lines has been preserved, the straightness is yielding and a distinguished elegance is coming into its own again. **TYPOGRAPHY HAS NOT BEEN NEGLECTED IN THESE DEVELOPMENTS, WHICH HAVE BEEN EXPRESSED BY AN OBVIOUS REVERSION TO CERTAIN STYLES. HOWEVER, MOST**

10 pt
 In recent years, a new tendency has become manifest in the decorative arts. While the simplicity of the lines has been preserved, the straightness is yielding and a distinguished elegance is coming into its own again. Typography has not been neglected in these developments, which have been expressed by an obvious reversion to certain styles. However, most of the existing types were old-fashioned and not adapted to today's working methods, owing their fragility. A new typeface had to be found with a design that corresponded to today's taste. Thus we have created Arsen, a modern and elegant typeface, both practical and robust... In recent years, a new tendency has become manifest in the decorative arts. While the simplicity of the lines has been preserved, the straightness is yielding and a distinguished elegance is coming into its own again. **TYPOGRAPHY HAS NOT BEEN NEGLECTED IN THESE DEVELOPMENTS, WHICH HAVE BEEN EXPRESSED BY AN OBVIOUS REVERSION TO CERTAIN STYLES. HOWEVER, MOST**

8 pt – 6 pt
 However, most of the existing types were old-fashioned and not adapted to today's working methods, owing their fragility. A new typeface had to be found with a design that corresponded to today's taste. Thus we have created Arsen, a modern and elegant typeface, both practical and robust... In recent years, a new tendency has become manifest in the decorative arts. While the simplicity of the lines has been preserved, the straightness is yielding and a distinguished elegance is coming into its own again. Typo

However, most of the existing types were old-fashioned and not adapted to today's working methods, owing their fragility. A new typeface had to be found with a design that corresponded to today's taste. Thus we have created Arsen, a modern and elegant typeface, both practical and robust... In recent years, a new tendency has become manifest in the decorative arts. While the simplicity of the lines has been preserved, the straightness is yielding and a distinguished elegance is coming into its own again. Typography has not been neglected in these developments, which have been expressed by an obvious reversion to certain styles. However, most of the existing types were old-fashioned and not adapted to today's working methods, owing their fragility. A new typeface had to be found with a design that corresponded to today's taste.

abcdefghijklmnopqrstu vwxyz 0123456789
 ABCDEFGHIJKLMNOPQRSTU VWXYZ &

40 pt
 Thus we have created

24 pt
 However, most of the existing types
 were old-fashioned and not adapted t
 MORE THAN 489 NEW TYPEFACES

18 pt
 In recent years, a new tendency has become mani
 fest in the decorative arts. While the simplicity o
 f the lines has been preserved, the straightness is
 yielding and a distinguished elegance is coming i

14 pt
 However, most of the existing types were old-fashioned and not
 adapted to today's working methods, owing their fragility. A ne
 w typeface had to be found with a design that corresponded to
 today's taste. Thus we have created Arsen, a modern and elegan
 t typeface, both practical and robust... In recent years, 6402 ne

12 pt
 A new typeface had to be found with a design that corresponded to today'
 s taste. Thus we have created Arsen, a modern & elegant typeface, both pr
 actical and robust... In recent years, 6402 new tendencies has become ma
 nifest in the decorative arts. While the simplicity of the lines has been pr
 eserved, the straightness is yielding and a distinguished elegance is comi
 THUS WE HAVE CREATED ARSEN, A MODERN & ELEGANT TYPEFAC

Pro

with a selection of
 OpenType Pro features

10 pt
 In recent years, a new tendency has become manifest in the decorative arts. While the s
 implicity of the lines has been preserved, the straightness is yielding and a distinguishe
 d elegance is coming into its own again. Typography has not been neglected in these dev
 elopments, which have been expressed by an obvious reversion to certain styles. Howeve
 r, most of the existing types were old-fashioned and not adapted to today's working met
 hods, owing their fragility. A new typeface had to be found with a design that correspon
 ded to today's taste. Thus we have created Arsen, a modern and elegant typeface, both pr
 actical and robust... In recent years, a new tendency has become manifest in the decorat
 TYPOGRAPHY HAS NOT BEEN NEGLECTED IN THESE DEVELOPMENTS, WHICH
 HAVE BEEN EXPRESSED BY AN OBVIOUS REVERSION TO CERTAIN STYLES. HOW

8 pt – 6 pt
 However, most of the existing types were old-fashion
 ed and not adapted to today's working methods, owi
 ng their fragility. A new typeface had to be found wit
 h a design that corresponded to today's taste. Thus w
 e have created Arsen, a modern and elegant typeface
 , both practical and robust... In recent years, a new te
 ndency has become manifest in the decorative arts. Wh
 ile the simplicity of the lines has been preserved, th
 e straightness is yielding and a distinguished eleganc

However, most of the existing types were old-fashioned and not adapte
 d to today's working methods, owing their fragility. A new typeface ha
 d to be found with a design that corresponded to today's taste. Thus w
 e have created Arsen, a modern and elegant typeface, both practical an
 d robust... In recent years, a new tendency has become manifest in the
 decorative arts. While the simplicity of the lines has been preserved, th
 e straightness is yielding and a distinguished elegance is coming into i
 ts own again. Typography has not been neglected in these developmen
 ts, which have been expressed by an obvious reversion to certain style
 s. However, most of the existing types were old-fashioned and not adap
 ted to today's working methods, owing their fragility. A new typeface h

abcdefghijklmnopqrstuvwxyz 0123456789
 ABCDEFGHIJKLMNOPQRSTUVWXYZ &

40 pt
 Thus we have created

24 pt
 However, most of the existing types were old-fashioned and not adapted to tod
 MORE THAN 489 NEW TYPEFACES H

18 pt
 In recent years, a new tendency has become manifest in the decorative arts. While the simplicity of the lines has been preserved, the straightness is yielding and a distinguished elegance is coming into its own

14 pt
 However, most of the existing types were old-fashioned and not adapted to today's working methods, owing their fragility. A new typeface had to be found with a design that corresponded to today's taste. Thus we have created Arsen, a modern and elegant typeface, both practical and robust... In recent years, 6402 new tendency h

12 pt
 A new typeface had to be found with a design that corresponded to today's taste. Thus we have created Arsen, a modern & elegant typeface, both practical and robust... In recent years, 6402 new tendencies has become manifest in the decorative arts. While the simplicity of the lines has been preserved, the straightness is yielding and a distinguished elegance is coming into its own again. Ty
 THUS WE HAVE CREATED ARSEN, A MODERN & ELEGANT TYPEFACE

10 pt
 In recent years, a new tendency has become manifest in the decorative arts. While the simplicity of the lines has been preserved, the straightness is yielding and a distinguished elegance is coming into its own again. Typography has not been neglected in these developments, which have been expressed by an obvious reversion to certain styles. However, most of the existing types were old-fashioned and not adapted to today's working methods, owing their fragility. A new typeface had to be found with a design that corresponded to today's taste. Thus we have created Arsen, a modern and elegant typeface, both practical and robust... In recent years, a new tendency has become manifest in the decorative arts. While the simplicity of the lines
 TYPOGRAPHY HAS NOT BEEN NEGLECTED IN THESE DEVELOPMENTS, WHICH HAVE BEEN EXPRESSED BY AN OBVIOUS REVERSION TO CERTAIN STYLES. HOWEVER, MOS

8 pt – 6 pt
 However, most of the existing types were old-fashioned and not adapted to today's working methods, owing their fragility. A new typeface had to be found with a design that corresponded to today's taste. Thus we have created Arsen, a modern and elegant typeface, both practical and robust... In recent years, a new tendency has become manifest in the decorative arts. While the simplicity of the lines has been preserved, the straightness is yielding and a distinguished elegance is coming into its own

However, most of the existing types were old-fashioned and not adapted to today's working methods, owing their fragility. A new typeface had to be found with a design that corresponded to today's taste. Thus we have created Arsen, a modern and elegant typeface, both practical and robust... In recent years, a new tendency has become manifest in the decorative arts. While the simplicity of the lines has been preserved, the straightness is yielding and a distinguished elegance is coming into its own again. Typography has not been neglected in these developments, which have been expressed by an obvious reversion to certain styles. However, most of the existing types were old-fashioned and not adapted to today's working methods, owing their fragility. A new typeface had to be found with a design that corre

abcdefghijklmnopqrstu v wxyz 0123456789
ABCDEFGHIJKLMN OPQRSTUVWXYZ &

Thus we have created

However, most of the existing types were old-fashioned and not adapted to
MORE THAN 489 NEW TYPEFACES

In recent years, a new tendency has become manifest in the decorative arts. While the simplicity of the lines has been preserved, the straightness is yielding and a distinguished elegance is coming in

However, most of the existing types were old-fashioned and not adapted to today's working methods, owing their fragility. A new typeface had to be found with a design that corresponded to today's taste. Thus we have created Arsen, a modern and elegant typeface, both practical and robust... In recent years, 6402

A new typeface had to be found with a design that corresponded to today's taste. Thus we have created Arsen, a modern & elegant typeface, both practical and robust... In recent years, 6402 new tendencies has become manifest in the decorative arts. While the simplicity of the lines has been preserved, the straightness is yielding and a distinguished elegance is coming into
THUS WE HAVE CREATED ARSEN, A MODERN & ELEGANT TYPEFACE

In recent years, a new tendency has become manifest in the decorative arts. While the simplicity of the lines has been preserved, the straightness is yielding and a distinguished elegance is coming into its own again. Typography has not been neglected in these developments, which have been expressed by an obvious reversion to certain styles. However, most of the existing types were old-fashioned and not adapted to today's working methods, owing their fragility. A new typeface had to be found with a design that corresponded to today's taste. Thus we have created Arsen, a modern and elegant typeface, both practical and robust... In recent years, a new tendency has become manifest in the
TYPOGRAPHY HAS NOT BEEN NEGLECTED IN THESE DEVELOPMENTS, WHICH HAVE BEEN EXPRESSED BY AN OBVIOUS REVERSION TO CERTAIN STYLES. HOW

However, most of the existing types were old-fashioned and not adapted to today's working methods, owing their fragility. A new typeface had to be found with a design that corresponded to today's taste. Thus we have created Arsen, a modern and elegant typeface, both practical and robust... In recent years, a new tendency has become manifest in the decorative arts. While the simplicity of the lines has been preserved, the straightness is yielding and a distinguished elegance

However, most of the existing types were old-fashioned and not adapted to today's working methods, owing their fragility. A new typeface had to be found with a design that corresponded to today's taste. Thus we have created Arsen, a modern and elegant typeface, both practical and robust... In recent years, a new tendency has become manifest in the decorative arts. While the simplicity of the lines has been preserved, the straightness is yielding and a distinguished elegance is coming into its own again. Typography has not been neglected in these developments, which have been expressed by an obvious reversion to certain styles. However, most of the existing types were old-fashioned and not adapted to today's working methods, owing their fragility. A new typeface had

40 pt

24 pt

18 pt

14 pt

12 pt

Pro

with a selection of
OpenType Pro features

10 pt

8 pt – 6 pt

abcdefghijklmnopqrstu vwxyz 0123456789
 ABCDEFGHIJKLMNOPQRSTU VWXYZ &

40 pt
 Thus we have created

24 pt
 However, most of the existing types we
 re old-fashioned and not adapted to to
 MORE THAN 489 NEW TYPEFACES H

18 pt
 In recent years, a new tendency has become manife
 st in the decorative arts. While the simplicity of the
 lines has been preserved, the straightness is yieldin
 g and a distinguished elegance is coming into its o

14 pt
 However, most of the existing types were old-fashioned and not ad
 apted to today's working methods, owing their fragility. A new typ
 eface had to be found with a design that corresponded to today's ta
 ste. Thus we have created Arsen, a modern and elegant typeface
 , both practical and robust... In recent years, 6402 new tendency h

12 pt
 A new typeface had to be found with a design that corresþonded to today's ta
 ste. Thus we have created Arsen, a modern & elegant typeface, both practical a
 nd robust... In recent years, 6402 new tendencies has become manifest in the
 decorative arts. While the simplicity of the lines has been preserved, the stra
 ightness is yielding and a distinguished elegance is coming into its own again.
 THUS WE HAVE CREATED ARSEN, A MODERN & ELEGANT TYPEFACE

10 pt
 In recent years, a new tendency has become manifest in the decorative arts. While the simplic
 ity of the lines has been preserved, the straightness is yielding and a distinguished elegance i
 s coming into its own again. Typography has not been neglected in these developments, whic
 h have been expressed by an obvious reversion to certain styles. However, most of the existin
 g types were old-fashioned and not adapted to today's working methods, owing their fragility
 . A new typeface had to be found with a design that corresponded to today's taste. Thus we h
 ave created Arsen, a modern and elegant typeface, both practical and robust... In recent year
 s, a new tendency has become manifest in the decorative arts. While the simplicity of the line
 TYPOGRAPHY HAS NOT BEEN NEGLECTED IN THESE DEVELOPMENTS, WHICH HAVE
 BEEN EXPRESSED BY AN OBVIOUS REVERSION TO CERTAIN STYLES. HOWEVER, MO

8 pt – 6 pt
 However, most of the existing types were old-fashioned
 and not adapted to today's working methods, owing the
 ir fragility. A new typeface had to be found with a desig
 n that corresponded to today's taste. Thus we have crea
 ted Arsen, a modern and elegant typeface, both practica
 l and robust... In recent years, a new tendency has beco
 me manifest in the decorative arts. While the simplicity
 of the lines has been preserved, the straightness is yield
 ing and a distinguished elegance is coming into its own

However, most of the existing types were old-fashioned and not adapted to
 today's working methods, owing their fragility. A new typeface had to be f
 ound with a design that corresponded to today's taste. Thus we have creat
 ed Arsen, a modern and elegant typeface, both practical and robust... In r
 ecent years, a new tendency has become manifest in the decorative arts. W
 hile the simplicity of the lines has been preserved, the straightness is yield
 ing and a distinguished elegance is coming into its own again. Typograph
 y has not been neglected in these developments, which have been expresse
 d by an obvious reversion to certain styles. However, most of the existing t
 ypes were old-fashioned and not adapted to today's working methods, owi
 ng their fragility. A new typeface had to be found with a design that corre

abcdefghijklmnopqrstuvwxy 0123456789
 ABCDEFGHIJKLMNOPQRSTUVWXYZ &

40 pt
 Thus we have created

24 pt
 However, most of the existing types
 were old-fashioned and not adapted
 MORE THAN 489 NEW TYPEFAC

18 pt
 In recent years, a new tendency has become man
 ifest in the decorative arts. While the simplicity
 of the lines has been preserved, the straightnes
 s is yielding and a distinguished elegance is com

14 pt
 However, most of the existing types were old-fashioned and n
 ot adapted to today's working methods, owing their fragility
 . A new typeface had to be found with a design that correspon
 ded to today's taste. Thus we have created Arsen, a modern an
 d elegant typeface, both practical and robust... In recent year

12 pt
 A new typeface had to be found with a design that corresponded to tod
 ay's taste. Thus we have created Arsen, a modern & elegant typeface, bo
 th practical and robust... In recent years, 6402 new tendencies has beco
 me manifest in the decorative arts. While the simplicity of the lines has
 been preserved, the straightness is yielding and a distinguished eleganc
 THUS WE HAVE CREATED ARSEN, A MODERN & ELEGANT TYPEFA

10 pt
 In recent years, a new tendency has become manifest in the decorative arts. While the
 simplicity of the lines has been preserved, the straightness is yielding and a distingui
 shed elegance is coming into its own again. Typography has not been neglected in the
 se developments, which have been expressed by an obvious reversion to certain styles
 . However, most of the existing types were old-fashioned and not adapted to today's wo
 rking methods, owing their fragility. A new typeface had to be found with a design th
 at corresponded to today's taste. Thus we have created Arsen, a modern and elegant t
 ypeface, both practical and robust... In recent years, a new tendency has become mani
 TYPOGRAPHY HAS NOT BEEN NEGLECTED IN THESE DEVELOPMENTS, WHIC
 H HAVE BEEN EXPRESSED BY AN OBVIOUS REVERSION TO CERTAIN STYLES. H

8 pt – 6 pt
 However, most of the existing types were old-fashio
 ned and not adapted to today's working methods, o
 wing their fragility. A new typeface had to be found
 with a design that corresponded to today's taste. Th
 us we have created Arsen, a modern and elegant typ
 eface, both practical and robust... In recent years, a
 new tendency has become manifest in the decorativ
 e arts. While the simplicity of the lines has been pre
 served, the straightness is yielding and a distinguish

However, most of the existing types were old-fashioned and not adap
 ted to today's working methods, owing their fragility. A new typeface
 had to be found with a design that corresponded to today's taste. Thu
 s we have created Arsen, a modern and elegant typeface, both practic
 al and robust... In recent years, a new tendency has become manifest
 in the decorative arts. While the simplicity of the lines has been prese
 rved, the straightness is yielding and a distinguished elegance is comi
 ng into its own again. Typography has not been neglected in these de
 velopments, which have been expressed by an obvious reversion to ce
 rtain styles. However, most of the existing types were old-fashioned a
 nd not adapted to today's working methods, owing their fragility. A n

Pro

with a selection of
 OpenType Pro features

abcdefghijklmnopqrstuvwxyz 0123456789
 ABCDEFGHIJKLMNOPQRSTUVWXYZ &

40 pt
 Thus we have created

24 pt
 However, most of the existing types were old-fashioned and not adapted to
MORE THAN 489 NEW TYPEFACES

18 pt
 In recent years, a new tendency has become manifest in the decorative arts. While the simplicity of the lines has been preserved, the straightness is yielding and a distinguished elegance is coming into

14 pt
 However, most of the existing types were old-fashioned and not adapted to today's working methods, owing their fragility. A new typeface had to be found with a design that corresponded to today's taste. Thus we have created Arsen, a modern and elegant typeface, both practical and robust... In recent years, 6402 new te

12 pt
Pro
 with a selection of OpenType Pro features
 A new typeface had to be found with a design that corresponded to today's taste. Thus we have created Arsen, a modern & elegant typeface, both practical and robust... In recent years, 6402 new tendencies has become manifest in the decorative arts. While the simplicity of the lines has been preserved, the straightness is yielding and a distinguished elegance is coming into its own
THUS WE HAVE CREATED ARSEN, A MODERN & ELEGANT TYPEFACE

10 pt
 In recent years, a new tendency has become manifest in the decorative arts. While the simplicity of the lines has been preserved, the straightness is yielding and a distinguished elegance is coming into its own again. Typography has not been neglected in these developments, which have been expressed by an obvious reversion to certain styles. However, most of the existing types were old-fashioned and not adapted to today's working methods, owing their fragility. A new typeface had to be found with a design that corresponded to today's taste. Thus we have created Arsen, a modern and elegant typeface, both practical and robust... In recent years, a new tendency has become manifest in the decorative arts. While the
TYPOGRAPHY HAS NOT BEEN NEGLECTED IN THESE DEVELOPMENTS, WHICH HAVE BEEN EXPRESSED BY AN OBVIOUS REVERSION TO CERTAIN STYLES. HOWEVER

8 pt – 6 pt
 However, most of the existing types were old-fashioned and not adapted to today's working methods, owing their fragility. A new typeface had to be found with a design that corresponded to today's taste. Thus we have created Arsen, a modern and elegant typeface, both practical and robust... In recent years, a new tendency has become manifest in the decorative arts. While the simplicity of the lines has been preserved, the straightness is yielding and a distinguished elegance is coming

However, most of the existing types were old-fashioned and not adapted to today's working methods, owing their fragility. A new typeface had to be found with a design that corresponded to today's taste. Thus we have created Arsen, a modern and elegant typeface, both practical and robust... In recent years, a new tendency has become manifest in the decorative arts. While the simplicity of the lines has been preserved, the straightness is yielding and a distinguished elegance is coming into its own again. Typography has not been neglected in these developments, which have been expressed by an obvious reversion to certain styles. However, most of the existing types were old-fashioned and not adapted to today's working methods, owing their fragility. A new typeface had to be found with a de

abcdefghijklmnopqrstu vwxyz 0123456789
 ABCDEFGHIJKLMNOPQRSTUVWXYZ &

40 pt
Thus we have created

24 pt
**However, most of the existing types were old-fashioned and not adapted
 MORE THAN 489 NEW TYPEFACES**

18 pt
In recent years, a new tendency has become manifest in the decorative arts. While the simplicity of the lines has been preserved, the straightness is yielding and a distinguished elegance is

14 pt
However, most of the existing types were old-fashioned and not adapted to today's working methods, owing their fragility. A new typeface had to be found with a design that corresponded to today's taste. Thus we have created Arsen, a modern and elegant typeface, both practical and robust... In recent

12 pt
**A new typeface had to be found with a design that corresponded to today's taste. Thus we have created Arsen, a modern & elegant typeface, both practical and robust... In recent years, 6402 new tendencies has become manifest in the decorative arts. While the simplicity of the lines has been preserved, the straightness is yielding and a distinguished
 THUS WE HAVE CREATED ARSEN, A MODERN & ELEGANT TYPE**

10 pt
**In recent years, a new tendency has become manifest in the decorative arts. While the simplicity of the lines has been preserved, the straightness is yielding and a distinguished elegance is coming into its own again. Typography has not been neglected in these developments, which have been expressed by an obvious reversion to certain styles. However, most of the existing types were old-fashioned and not adapted to today's working methods, owing their fragility. A new typeface had to be found with a design that corresponded to today's taste. Thus we have created Arsen, a modern and elegant typeface, both practical and robust... In recent years, a new tendency has
 TYPOGRAPHY HAS NOT BEEN NEGLECTED IN THESE DEVELOPMENTS, WHICH HAVE BEEN EXPRESSED BY AN OBVIOUS REVERSION TO CERTAIN STYLES**

8 pt – 6 pt
However, most of the existing types were old-fashioned and not adapted to today's working methods, owing their fragility. A new typeface had to be found with a design that corresponded to today's taste. Thus we have created Arsen, a modern and elegant typeface, both practical and robust... In recent years, a new tendency has become manifest in the decorative arts. While the simplicity of the lines has been preserved, the straightness is yielding an

However, most of the existing types were old-fashioned and not adapted to today's working methods, owing their fragility. A new typeface had to be found with a design that corresponded to today's taste. Thus we have created Arsen, a modern and elegant typeface, both practical and robust... In recent years, a new tendency has become manifest in the decorative arts. While the simplicity of the lines has been preserved, the straightness is yielding and a distinguished elegance is coming into its own again. Typography has not been neglected in these developments, which have been expressed by an obvious reversion to certain styles. However, most of the existing types were old-fashioned and not adapted to today's working methods, owing

abcdefghijklmnopqrstu vwxyz 0123456789
 ABCDEFGHIJKLMNOPQRSTUVWXYZ &

40 pt
Thus we have created

24 pt
**However, most of the existing types
 were old-fashioned and not adapted
 MORE THAN 489 NEW TYPEFACES**

18 pt
**In recent years, a new tendency has become ma
 nifest in the decorative arts. While the simplicit
 y of the lines has been preserved, the straightne
 ss is yielding and a distinguished elegance is co**

14 pt
**However, most of the existing types were old-fashioned and no
 t adapted to today's working methods, owing their fragility. A
 new typeface had to be found with a design that corresponde
 d to today's taste. Thus we have created Arsen, a modern and
 elegant typeface, both practical and robust... In recent years**

12 pt
**A new typeface had to be found with a design that correspon
 ded to today's taste. Thus we have created Arsen, a modern & elegant typeface, both pr
 actical and robust... In recent years, 6402 new tendencies has become m
 anifest in the decorative arts. While the simplicity of the lines has been p
 reserved, the straightness is yielding and a distinguished elegance is com
 THUS WE HAVE CREATED ARSEN, A MODERN & ELEGANT TYPEFAC**

10 pt
**In recent years, a new tendency has become manifest in the decorative arts. While the si
 mplicity of the lines has been preserved, the straightness is yielding and a distinguishe
 d elegance is coming into its own again. Typography has not been neglected in these de
 velopments, which have been expressed by an obvious reversion to certain styles. Howe
 ver, most of the existing types were old-fashioned and not adapted to today's working m
 ethods, owing their fragility. A new typeface had to be found with a design that correspo
 nded to today's taste. Thus we have created Arsen, a modern and elegant typeface, bot
 h practical and robust... In recent years, a new tendency has become manifest in the de
 TYPOGRAPHY HAS NOT BEEN NEGLECTED IN THESE DEVELOPMENTS, WHICH HA
 VE BEEN EXPRESSED BY AN OBVIOUS REVERSION TO CERTAIN STYLES. HOWEVE**

8 pt – 6 pt
**However, most of the existing types were old-fashion
 ed and not adapted to today's working methods, owi
 ng their fragility. A new typeface had to be found wi
 th a design that corresponded to today's taste. Thus
 we have created Arsen, a modern and elegant typefa
 ce, both practical and robust... In recent years, a ne
 w tendency has become manifest in the decorative ar
 ts. While the simplicity of the lines has been preserv
 ed, the straightness is yielding and a distinguished e**

**However, most of the existing types were old-fashioned and not adapte
 d to today's working methods, owing their fragility. A new typeface ha
 d to be found with a design that corresponded to today's taste. Thus we
 have created Arsen, a modern and elegant typeface, both practical a
 nd robust... In recent years, a new tendency has become manifest in t
 he decorative arts. While the simplicity of the lines has been preserve
 d, the straightness is yielding and a distinguished elegance is coming i
 nto its own again. Typography has not been neglected in these develo
 pments, which have been expressed by an obvious reversion to certain
 styles. However, most of the existing types were old-fashioned and no
 t adapted to today's working methods, owing their fragility. A new typ**

abcdefghijklmnopqrstuvwxyz 0123456789
 ABCDEFGHIJKLMNOPQRSTUVWXYZ &

Thus we have created

40 pt

**However, most of the existing types were old-fashioned and not adapted
 MORE THAN 489 NEW TYPEFAC**

24 pt

In recent years, a new tendency has become manifest in the decorative arts. While the simplicity of the lines has been preserved, the straightness is yielding and a distinguished elegance

18 pt

However, most of the existing types were old-fashioned and not adapted to today's working methods, owing their fragility. A new typeface had to be found with a design that corresponded to today's taste. Thus we have created Arsen, a modern and elegant typeface, both practical and robust... In r

14 pt

**A new typeface had to be found with a design that corresponded to today's taste. Thus we have created Arsen, a modern & elegant typeface, both practical and robust... In recent years, 6402 new tendencies has become manifest in the decorative arts. While the simplicity of the lines has been preserved, the straightness is yielding and a distinguished
 THUS WE HAVE CREATED ARSEN, A MODERN & ELEGANT TY**

12 pt

Pro

with a selection of
 OpenType Pro features

10 pt

**In recent years, a new tendency has become manifest in the decorative arts. While the simplicity of the lines has been preserved, the straightness is yielding and a distinguished elegance is coming into its own again. Typography has not been neglected in these developments, which have been expressed by an obvious reversion to certain styles. However, most of the existing types were old-fashioned and not adapted to today's working methods, owing their fragility. A new typeface had to be found with a design that corresponded to today's taste. Thus we have created Arsen, a modern and elegant typeface, both practical and robust... In recent years, a new tendency
 TYPOGRAPHY HAS NOT BEEN NEGLECTED IN THESE DEVELOPMENTS, WHICH HAVE BEEN EXPRESSED BY AN OBVIOUS REVERSION TO CERTAIN STYL**

8 pt – 6 pt

However, most of the existing types were old-fashioned and not adapted to today's working methods, owing their fragility. A new typeface had to be found with a design that corresponded to today's taste. Thus we have created Arsen, a modern and elegant typeface, both practical and robust... In recent years, a new tendency has become manifest in the decorative arts. While the simplicity of the lines has been preserved, the straightness is yielding

However, most of the existing types were old-fashioned and not adapted to today's working methods, owing their fragility. A new typeface had to be found with a design that corresponded to today's taste. Thus we have created Arsen, a modern and elegant typeface, both practical and robust... In recent years, a new tendency has become manifest in the decorative arts. While the simplicity of the lines has been preserved, the straightness is yielding and a distinguished elegance is coming into its own again. Typography has not been neglected in these developments, which have been expressed by an obvious reversion to certain styles. However, most of the existing types were old-fashioned and not adapted to today's working meth

abcdefghijklmnopqrstuvwxyz 0123456789
 ABCDEFGHIJKLMNOPQRSTUVWXYZ &

Thus we have created

However, most of the existing types were old-fashioned and not adapted MORE THAN 489 NEW TYPEFACES

In recent years, a new tendency has become manifest in the decorative arts. While the simplicity of the lines has been preserved, the straightness is yielding and a distinguished elegance is c

However, most of the existing types were old-fashioned and not adapted to today's working methods, owing their fragility. A new typeface had to be found with a design that corresponded to today's taste. Thus we have created Arsen, a modern and elegant typeface, both practical and robust... In recent ye

A new typeface had to be found with a design that corresponded to today's taste. Thus we have created Arsen, a modern & elegant typeface, both practical and robust... In recent years, 6402 new tendencies has become manifest in the decorative arts. While the simplicity of the lines has been preserved, the straightness is yielding and a distinguished elegance
THUS WE HAVE CREATED ARSEN, A MODERN & ELEGANT TYPEFAC

In recent years, a new tendency has become manifest in the decorative arts. While the simplicity of the lines has been preserved, the straightness is yielding and a distinguished elegance is coming into its own again. Typography has not been neglected in these developments, which have been expressed by an obvious reversion to certain styles. However, most of the existing types were old-fashioned and not adapted to today's working methods, owing their fragility. A new typeface had to be found with a design that corresponded to today's taste. Thus we have created Arsen, a modern and elegant typeface, both practical and robust... In recent years, a new tendency has become manifest in the decorative arts. While the simplicity of the lines has been preserved, the straightness is yielding and a distinguished elegance is coming into its own again. Typography has not been neglected in these developments, which have been expressed by an obvious reversion to certain styles. However, most of the existing types were old-fashioned and not adapted to today's working methods, owing their fragility.

However, most of the existing types were old-fashioned and not adapted to today's working methods, owing their fragility. A new typeface had to be found with a design that corresponded to today's taste. Thus we have created Arsen, a modern and elegant typeface, both practical and robust... In recent years, a new tendency has become manifest in the decorative arts. While the simplicity of the lines has been preserved, the straightness is yielding and a disti

However, most of the existing types were old-fashioned and not adapted to today's working methods, owing their fragility. A new typeface had to be found with a design that corresponded to today's taste. Thus we have created Arsen, a modern and elegant typeface, both practical and robust... In recent years, a new tendency has become manifest in the decorative arts. While the simplicity of the lines has been preserved, the straightness is yielding and a distinguished elegance is coming into its own again. Typography has not been neglected in these developments, which have been expressed by an obvious reversion to certain styles. However, most of the existing types were old-fashioned and not adapted to today's working methods, owing their fragility.

40 pt

24 pt

18 pt

14 pt

12 pt

Pro

with a selection of
OpenType Pro features

10 pt

8 pt – 6 pt

68 pt (-10)

Creditworthy

ExtraLight

Grandfathers

Light

Mythological

Regular

Relinquishes

Demi

Kickstarting

Bold

Profitability

ExtraBold

Bourgeoisie

Heavy

68 pt (-10)

Creditworthy

ExtraLight

Grandfathers

Light

Mythological

Regular

Relinquishes

Demi

Kickstarting

Bold

Profitability

ExtraBold

Bourgeoisie

Heavy

68 pt (-10)

INAUGURAL

ExtraLight

DOWNBEAT

Light

SPRINKLED

Regular

PACKAGING

Demi

KINEMATIC

Bold

DOWNSIDE

ExtraBold

EXCHANGE

Heavy

68 pt (-10)

INAUGURAL

ExtraLight

DOWNBEAT

Light

SPRINKLED

Regular

PACKAGING

Demi

KINEMATIC

Bold

DOWNSIDE

ExtraBold

EXCHANGE

Heavy

abcdefghijklmnopqrstuvwxy 0123456789
 ABCDEFGHIJKLMNOPQRSTUVWXYZ &

38 pt

While the simplicity of the lines has been preserved, the straightness is yielding & a distinguished elegance is coming into its own. **DISTINGUISHED ELEGANCE**

24 pt

Pro

with a selection of
 OpenType Pro features

However, most of the existing types were old-fashioned & not adapted to today's working methods, owing to their fragility. A new typeface had to be found with a design that corresponded to today's taste. Therefore we have created Arsen, a modern and elegant typeface, both practical and robust.

18 pt

In recent years, a new tendency has become manifest in the decorative arts. While the simplicity of the lines has been preserved, the straightness is yielding and a distinguished elegance is coming into its own again. Typography has not been neglected in these developments, which have been expressed by an obvious revival.

14 pt

However, most of the existing types were old-fashioned and not adapted to today's working methods, owing to their fragility. A new typeface had to be found with a design that corresponded to today's taste. Thus we have created Arsen, a modern and elegant typeface, both practical and robust... In recent years, a new tendency has become manifest.

abcdefghijklmnopqrstuvwxyz 0123456789
 ABCDEFGHIJKLMNOPQRSTUVWXYZ &

38 pt

*While the simplicity of the lines has been preserved, the straightness is yielding & a distinguished elegance is coming into its own again. Ty
 DISTINGUISHED ELEGA*

24 pt

Pro

with a selection of
 OpenType Pro features

However, most of the existing types were old-fashioned & not adapted to today's working methods, owing to their fragility. A new typeface had to be found with a design that corresponded to today's taste. Therefore we have created Arsen, a modern and elegant typeface, both practical and robust...

18 pt

In recent years, a new tendency has become manifest in the decorative arts. While the simplicity of the lines has been preserved, the straightness is yielding and a distinguished elegance is coming into its own again. Typography has not been neglected in these developments, which have been expressed by an obvious reversion to certain styles. H

14 pt

However, most of the existing types were old-fashioned and not adapted to today's working methods, owing their fragility. A new typeface had to be found with a design that corresponded to today's taste. Thus we have created Arsen, a modern and elegant typeface, both practical and robust... In recent years, a new tendency has become manifest in the decorative arts.

abcdefghijklmnopqrstuvwxyz 0123456789
 ABCDEFGHIJKLMNOPQRSTUVWXYZ &

38 pt

While the simplicity of the lines has been preserved, the straightness is yielding & a distinguished elegance is coming into its own. A new typeface had to be found with a design that corresponded to today's taste. Therefore we have created Arsen, a modern and elegant typeface, both practical and robust.

24 pt

Pro

with a selection of
 OpenType Pro features

However, most of the existing types were old-fashioned & not adapted to today's working methods, owing to their fragility. A new typeface had to be found with a design that corresponded to today's taste. Therefore we have created Arsen, a modern and elegant typeface, both practical and robust.

18 pt

In recent years, a new tendency has become manifest in the decorative arts. While the simplicity of the lines has been preserved, the straightness is yielding and a distinguished elegance is coming into its own as a gain. Typography has not been neglected in these developments, which have been expressed by an obvious

14 pt

However, most of the existing types were old-fashioned and not adapted to today's working methods, owing their fragility. A new typeface had to be found with a design that corresponded to today's taste. Thus we have created Arsen, a modern and elegant typeface, both practical and robust... In recent years, a new tendency has become manifest

abcdefghijklmnopqrstuvwxyz 0123456789
 ABCDEFGHIJKLMNOPQRSTUVWXYZ &

38 pt

While the simplicity of the lines has been preserved, the straightness is yielding & a distinguished elegance is coming into its own again.
DISTINGUISHED ELEGA

24 pt

Pro

with a selection of
 OpenType Pro features

However, most of the existing types were old-fashioned & not adapted to today's working methods, owing to their fragility. A new typeface had to be found with a design that corresponded to today's taste. Therefore we have created Arsen, a modern and elegant typeface, both practical and robust...

18 pt

In recent years, a new tendency has become manifest in the decorative arts. While the simplicity of the lines has been preserved, the straightness is yielding and a distinguished elegance is coming into its own again. Typography has not been neglected in these developments, which have been expressed by an obvious reversion to certain styles

14 pt

However, most of the existing types were old-fashioned and not adapted to today's working methods, owing their fragility. A new typeface had to be found with a design that corresponded to today's taste. Thus we have created Arsen, a modern and elegant typeface, both practical and robust... In recent years, a new tendency has become manifest in the decora

abcdefghijklmnopqrstu vwxyz 0123456789
 ABCDEFGHIJKLMNOPQRSTU VWXYZ &

38 pt

While the simplicity of the lines has been preserved, the straightness is yielding & a distinguished elegance is coming into it
 DISTINGUISHED ELEG

24 pt

Pro

with a selection of
 OpenType Pro features

However, most of the existing types were old-fashioned & not adapted to today's working methods, owing to their fragility. A new typeface had to be found with a design that corresponded to today's taste. Therefore we have created Arsen, a modern and elegant typeface

18 pt

In recent years, a new tendency has become manifest in the decorative arts. While the simplicity of the lines has been preserved, the straightness is yielding and a distinguished elegance is coming into its own again. Typography has not been neglected in these developments, which have been expressed by an o

14 pt

However, most of the existing types were old-fashioned and not adapted to today's working methods, owing their fragility. A new typeface had to be found with a design that corresponded to today's taste. Thus we have created Arsen, a modern and elegant typeface, both practical and robust... In recent years, a new tendency has bec

abcdefghijklmnopqrstuvwxyz 0123456789
 ABCDEFGHIJKLMNOPQRSTUVWXYZ &

38 pt

While the simplicity of the lines has been preserved, the straightness is yielding & a distinguished elegance is coming into its own
DISTINGUISHED ELEGA

24 pt

Pro

with a selection of
 OpenType Pro features

However, most of the existing types were old-fashioned & not adapted to today's working methods, owing to their fragility. A new typeface had to be found with a design that corresponded to today's taste. Therefore we have created Arsen, a modern and elegant typeface, both practical and ro

18 pt

In recent years, a new tendency has become manifest in the decorative arts. While the simplicity of the lines has been preserved, the straightness is yielding and a distinguished elegance is coming into its own again. Typography has not been neglected in these developments, which have been expressed by an obvious reversion to certai

14 pt

However, most of the existing types were old-fashioned and not adapted to today's working methods, owing their fragility. A new typeface had to be found with a design that corresponded to today's taste. Thus we have created Arsen, a modern and elegant typeface, both practical and robust... In recent years, a new tendency has become manifest in th

abcdefghijklmnopqrstu vwxyz 0123456789
 ABCDEFGHIJKLMNOPQRSTU VWXYZ &

38 pt

While the simplicity of the lines has been preserved, the straightness is yielding & a distinguished elegance is coming into it
 DISTINGUISHED ELEG

24 pt

Pro

with a selection of
 OpenType Pro features

However, most of the existing types were old-fashioned & not adapted to today's working methods, owing to their fragility. A new typeface had to be found with a design that corresponded to today's taste. Therefore we have created Arsen, a modern and elegant typeface

18 pt

In recent years, a new tendency has become manifest in the decorative arts. While the simplicity of the lines has been preserved, the straightness is yielding and a distinguished elegance is coming into its own again. Typography has not been neglected in these developments, which have been expressed by an ob

14 pt

However, most of the existing types were old-fashioned and not adapted to today's working methods, owing their fragility. A new typeface had to be found with a design that corresponded to today's taste. Thus we have created Arsen, a modern and elegant typeface, both practical and robust... In recent years, a new tendency has b

abcdefghijklmnopqrstuvwxyz 0123456789
 ABCDEFGHIJKLMNOPQRSTUVWXYZ &

38 pt

While the simplicity of the lines has been preserved, the straightness is yielding & a distinguished elegance is coming into its own
DISTINGUISHED ELEGA

24 pt

Pro

with a selection of
 OpenType Pro features

However, most of the existing types were old-fashioned & not adapted to today's working methods, owing to their fragility. A new typeface had to be found with a design that corresponded to today's taste. Therefore we have created Arsen, a modern and elegant typeface, both practical and

18 pt

In recent years, a new tendency has become manifest in the decorative arts. While the simplicity of the lines has been preserved, the straightness is yielding and a distinguished elegance is coming into its own again. Typography has not been neglected in these developments, which have been expressed by an obvious reversion to

14 pt

However, most of the existing types were old-fashioned and not adapted to today's working methods, owing their fragility. A new typeface had to be found with a design that corresponded to today's taste. Thus we have created Arsen, a modern and elegant typeface, both practical and robust... In recent years, a new tendency has become manifest in

abcdefghijklmnopqrstuvwxyz 0123456789
 ABCDEFGHIJKLMNOPQRSTUVWXYZ &

38 pt

While the simplicity of the lines has been preserved, the straightness is yielding & a distinguished elegance is coming into
DISTINGUISHED ELE

24 pt

Pro

with a selection of
 OpenType Pro features

However, most of the existing types were old-fashioned & not adapted to today's working methods, owing to their fragility. A new typeface had to be found with a design that corresponded to today's taste. Therefore we have created Arsen, a modern and elegant typeface

18 pt

In recent years, a new tendency has become manifest in the decorative arts. While the simplicity of the lines has been preserved, the straightness is yielding and a distinguished elegance is coming into its own again. Typography has not been neglected in these developments, which have been expressed by

14 pt

However, most of the existing types were old-fashioned and not adapted to today's working methods, owing their fragility. A new typeface had to be found with a design that corresponded to today's taste. Thus we have created Arsen, a modern and elegant typeface, both practical and robust... In recent years, a new tendency

abcdefghijklmnopqrstuvwxyz 0123456789
 ABCDEFGHIJKLMNOPQRSTUVWXYZ &

38 pt

While the simplicity of the lines has been preserved, the straightness is yielding & a distinguished elegance is coming into its
DISTINGUISHED ELEG

24 pt

Pro

with a selection of
 OpenType Pro features

However, most of the existing types were old-fashioned & not adapted to today's working methods, owing to their fragility. A new typeface had to be found with a design that corresponded to today's taste. Therefore we have created Arsen, a modern and elegant typeface, both prac

18 pt

In recent years, a new tendency has become manifest in the decorative arts. While the simplicity of the lines has been preserved, the straightness is yielding and a distinguished elegance is coming into its own again. Typography has not been neglected in these developments, which have been expressed by an obvious r

14 pt

However, most of the existing types were old-fashioned and not adapted to today's working methods, owing their fragility. A new typeface had to be found with a design that corresponded to today's taste. Thus we have created Arsen, a modern and elegant typeface, both practical and robust... In recent years, a new tendency has become

abcdefghijklmnopqrstuvwxyz 0123456789
 ABCDEFGHIJKLMNOPQRSTUVWXYZ &

38 pt

While the simplicity of the lines has been preserved, the straightness is yielding & a distinguished elegance is coming in. DISTINGUISHED ELE

24 pt

Pro

with a selection of
 OpenType Pro features

However, most of the existing types were old-fashioned & not adapted to today's working methods, owing to their fragility. A new typeface had to be found with a design that corresponded to today's taste. Therefore we have created Arsen, a modern and elegant

18 pt

In recent years, a new tendency has become manifest in the decorative arts. While the simplicity of the lines has been preserved, the straightness is yielding and a distinguished elegance is coming in to its own again. Typography has not been neglected in these developments, which have been expr

14 pt

However, most of the existing types were old-fashioned and not adapted to today's working methods, owing their fragility. A new typeface had to be found with a design that corresponded to today's taste. Thus we have created Arsen, a modern and elegant typeface, both practical and robust... In recent years, a new te

abcdefghijklmnopqrstuvwxyz 0123456789
 ABCDEFGHIJKLMNOPQRSTUVWXYZ &

38 pt

While the simplicity of the lines has been preserved, the straightness is yielding & a distinguished elegance is coming i
DISTINGUISHED ELEG

24 pt

Pro

with a selection of
 OpenType Pro features

However, most of the existing types were old-fashioned & not adapted to today's working methods, owing to their fragility. A new typeface had to be found with a design that corresponded to today's taste. Therefore we have created Arsen, a modern and elegant typef

18 pt

In recent years, a new tendency has become manifest in the decorative arts. While the simplicity of the lines has been preserved, the straightness is yielding and a distinguished elegance is coming into its own again. Typography has not been neglected in these developments, which have been expressed b

14 pt

However, most of the existing types were old-fashioned and not adapted to today's working methods, owing their fragility. A new typeface had to be found with a design that corresponded to today's taste. Thus we have created Arsen, a modern and elegant typeface, both practical and robust... In recent years, a new tende

abcdefghijklmnopqrstuvwxyz 0123456789
 ABCDEFGHIJKLMNOPQRSTUVWXYZ &

38 pt

While the simplicity of the lines has been preserved, the straightness is yielding & a distinguished elegance is coming in.
DISTINGUISHED ELE

24 pt

Pro

with a selection of
 OpenType Pro features

However, most of the existing types were old-fashioned & not adapted to today's working methods, owing to their fragility. A new typeface had to be found with a design that corresponded to today's taste. Therefore we have created Arsen, a modern and e

18 pt

In recent years, a new tendency has become manifest in the decorative arts. While the simplicity of the lines has been preserved, the straightness is yielding and a distinguished elegance is coming into its own again. Typography has not been neglected in these developments, which have been ex

14 pt

However, most of the existing types were old-fashioned and not adapted to today's working methods, owing their fragility. A new typeface had to be found with a design that corresponded to today's taste. Thus we have created Arsen, a modern and elegant typeface, both practical and robust... In recent years

abcdefghijklmnopqrstuvwxyz 0123456789
 ABCDEFGHIJKLMNOPQRSTUVWXYZ &

38 pt

While the simplicity of the lines has been preserved, the straightness is yielding & a distinguished elegance is coming
DISTINGUISHED ELEG

24 pt

Pro

with a selection of
 OpenType Pro features

However, most of the existing types were old-fashioned & not adapted to today's working methods, owing to their fragility. A new typeface had to be found with a design that corresponded to today's taste. Therefore we have created Arsen, a modern and elegant

18 pt

In recent years, a new tendency has become manifest in the decorative arts. While the simplicity of the lines has been preserved, the straightness is yielding and a distinguished elegance is coming into its own again. Typography has not been neglected in these developments, which have been e

14 pt

However, most of the existing types were old-fashioned and not adapted to today's working methods, owing their fragility. A new typeface had to be found with a design that corresponded to today's taste. Thus we have created Arsen, a modern and elegant typeface, both practical and robust... In recent years, a ne

68 pt (-10)

Creditworthy

ExtraLight

Grandfathers

Light

Mythological

Regular

Relinquishes

Demi

Kickstarting

Bold

Profitability

ExtraBold

Bourgeoisie

Heavy

68 pt (-10)

Creditworthy

ExtraLight

Grandfathers

Light

Mythological

Regular

Relinquishes

Demi

Kickstarting

Bold

Profitability

ExtraBold

Bourgeoisie

Heavy

68 pt (-10)

INAUGURAL

ExtraLight

DOWNBEAT

Light

SPRINKLED

Regular

PACKAGING

Demi

KINEMATIC

Bold

DOWNSIDE

ExtraBold

EXCHANGE

Heavy

68 pt (-10)

INAUGURAL

ExtraLight

DOWNBEAT

Light

SPRINKLED

Regular

PACKAGING

Demi

KINEMATIC

Bold

DOWNSIDE

ExtraBold

EXCHANGE

Heavy

abcdefghijklmnopqrstuvwxyz 0123456789
 ABCDEFGHIJKLMNOPQRSTUVWXYZ &

38 pt

While the simplicity of the lines has been preserved, the straightness is yielding & a distinguished elegance is coming into its own. **DISTINGUISHED ELEG**

24 pt

Pro

with a selection of
 OpenType Pro features

However, most of the existing types were old-fashioned & not adapted to today's working methods, owing to their fragility. A new typeface had to be found with a design that corresponded to today's taste. Therefore we have created Arsen, a modern and elegant typeface, both practical a

18 pt

In recent years, a new tendency has become manifest in the decorative arts. While the simplicity of the lines has been preserved, the straightness is yielding and a distinguished elegance is coming into its own again. Typography has not been neglected in these developments, which have been expressed by an obvious reversion

14 pt

However, most of the existing types were old-fashioned and not adapted to today's working methods, owing their fragility. A new typeface had to be found with a design that corresponded to today's taste. Thus we have created Arsen, a modern and elegant typeface, both practical and robust... In recent years, a new tendency has become manifest i

abcdefghijklmnopqrstuvwxyz 0123456789
 ABCDEFGHIJKLMNOPQRSTUVWXYZ &

38 pt

While the simplicity of the lines has been preserved, the straightness is yielding & a distinguished elegance is coming into its own again. Typo
DISTINGUISHED ELEGA

24 pt

Pro

with a selection of
 OpenType Pro features

However, most of the existing types were old-fashioned & not adapted to today's working methods, owing to their fragility. A new typeface had to be found with a design that corresponded to today's taste. Therefore we have created Arsen, a modern and elegant typeface, both practical and robust...

18 pt

In recent years, a new tendency has become manifest in the decorative arts. While the simplicity of the lines has been preserved, the straightness is yielding and a distinguished elegance is coming into its own again. Typography has not been neglected in these developments, which have been expressed by an obvious reversion to certain styles. However, mos

14 pt

However, most of the existing types were old-fashioned and not adapted to today's working methods, owing their fragility. A new typeface had to be found with a design that corresponded to today's taste. Thus we have created Arsen, a modern and elegant typeface, both practical and robust... In recent years, a new tendency has become manifest in the decorative arts. While t

abcdefghijklmnopqrstuvwxyz 0123456789
 ABCDEFGHIJKLMNOPQRSTUVWXYZ &

38 pt

While the simplicity of the lines has been preserved, the straightness is yielding & a distinguished elegance is coming into its own. **DISTINGUISHED ELEGANCE**

24 pt

Pro

with a selection of
 OpenType Pro features

However, most of the existing types were old-fashioned & not adapted to today's working methods, owing to their fragility. A new typeface had to be found with a design that corresponded to today's taste. Therefore we have created Arsen, a modern and elegant typeface, both practical

18 pt

In recent years, a new tendency has become manifest in the decorative arts. While the simplicity of the lines has been preserved, the straightness is yielding and a distinguished elegance is coming into its own again. Typography has not been neglected in these developments, which have been expressed by an obvious reversal

14 pt

However, most of the existing types were old-fashioned and not adapted to today's working methods, owing to their fragility. A new typeface had to be found with a design that corresponded to today's taste. Thus we have created Arsen, a modern and elegant typeface, both practical and robust... In recent years, a new tendency has become manifest in

abcdefghijklmnopqrstuvwxyz 0123456789
 ABCDEFGHIJKLMNOPQRSTUVWXYZ &

38 pt

While the simplicity of the lines has been preserved, the straightness is yielding & a distinguished elegance is coming into its own again. Ty
DISTINGUISHED ELEGA

24 pt

Pro

with a selection of
 OpenType Pro features

However, most of the existing types were old-fashioned & not adapted to today's working methods, owing to their fragility. A new type face had to be found with a design that corresponded to today's taste. Therefore we have created Arsen, a modern and elegant typeface, both practical and robust...

18 pt

In recent years, a new tendency has become manifest in the decorative arts. While the simplicity of the lines has been preserved, the straightness is yielding and a distinguished elegance is coming into its own again. Typography has not been neglected in these developments, which have been expressed by an obvious reversion to certain styles. However

14 pt

However, most of the existing types were old-fashioned and not adapted to today's working methods, owing their fragility. A new typeface had to be found with a design that corresponded to today's taste. Thus we have created Arsen, a modern and elegant typeface, both practical and robust... In recent years, a new tendency has become manifest in the decorative arts. Wh

abcdefghijklmnopqrstuvwxyz 0123456789
 ABCDEFGHIJKLMNOPQRSTUVWXYZ &

38 pt

While the simplicity of the lines has been preserved, the straightness is yielding & a distinguished elegance is coming into its own. **DISTINGUISHED ELEG**

24 pt

Pro

with a selection of
 OpenType Pro features

However, most of the existing types were old-fashioned & not adapted to today's working methods, owing to their fragility. A new typeface had to be found with a design that corresponded to today's taste. Therefore we have created Arsen, a modern and elegant typeface, both pr

18 pt

In recent years, a new tendency has become manifest in the decorative arts. While the simplicity of the lines has been preserved, the straightness is yielding and a distinguished elegance is coming into its own again. Typography has not been neglected in these developments, which have been expressed by an obvious r

14 pt

However, most of the existing types were old-fashioned and not adapted to today's working methods, owing their fragility. A new typeface had to be found with a design that corresponded to today's taste. Thus we have created Arsen, a modern and elegant typeface, both practical and robust... In recent years, a new tendency has become m

abcdefghijklmnopqrstuvwxyz 0123456789
 ABCDEFGHIJKLMNOPQRSTUVWXYZ &

38 pt

While the simplicity of the lines has been preserved, the straightness is yielding & a distinguished elegance is coming into its own again.
DISTINGUISHED ELEGA

24 pt

Pro

with a selection of
 OpenType Pro features

However, most of the existing types were old-fashioned & not adapted to today's working methods, owing to their fragility. A new typeface had to be found with a design that corresponded to today's taste. Therefore we have created Arsen, a modern and elegant typeface, both practical and robust...

18 pt

In recent years, a new tendency has become manifest in the decorative arts. While the simplicity of the lines has been preserved, the straightness is yielding and a distinguished elegance is coming into its own again. Typography has not been neglected in these developments, which have been expressed by an obvious reversion to certain styles.

14 pt

However, most of the existing types were old-fashioned and not adapted to today's working methods, owing their fragility. A new typeface had to be found with a design that corresponded to today's taste. Thus we have created Arsen, a modern and elegant typeface, both practical and robust... In recent years, a new tendency has become manifest in the decorati

abcdefghijklmnopqrstuvwxyz 0123456789
 ABCDEFGHIJKLMNOPQRSTUVWXYZ &

38 pt

While the simplicity of the lines has been preserved, the straightness is yielding & a distinguished elegance is coming into its DISTINGUISHED ELEG

24 pt

Pro

with a selection of
 OpenType Pro features

However, most of the existing types were old-fashioned & not adapted to today's working methods, owing to their fragility. A new typeface had to be found with a design that corresponded to today's taste. Therefore we have created Arsen, a modern and elegant typeface, both pr

18 pt

In recent years, a new tendency has become manifest in the decorative arts. While the simplicity of the lines has been preserved, the straightness is yielding and a distinguished elegance is coming into its own again. Typography has not been neglected in these developments, which have been expressed by an obvious r

14 pt

However, most of the existing types were old-fashioned and not adapted to today's working methods, owing their fragility. A new typeface had to be found with a design that corresponded to today's taste. Thus we have created Arsen, a modern and elegant typeface, both practical and robust... In recent years, a new tendency has become m

abcdefghijklmnopqrstuvwxyz 0123456789
 ABCDEFGHIJKLMNOPQRSTUVWXYZ &

38 pt

While the simplicity of the lines has been preserved, the straightness is yielding & a distinguished elegance is coming into its own again.
DISTINGUISHED ELEGANCE

24 pt

Pro

with a selection of
 OpenType Pro features

However, most of the existing types were old-fashioned & not adapted to today's working methods, owing to their fragility. A new typeface had to be found with a design that corresponded to today's taste. Therefore we have created Arsen, a modern and elegant typeface, both practical and robust...

18 pt

In recent years, a new tendency has become manifest in the decorative arts. While the simplicity of the lines has been preserved, the straightness is yielding and a distinguished elegance is coming into its own again. Typography has not been neglected in these developments, which have been expressed by an obvious reversion to certain s

14 pt

However, most of the existing types were old-fashioned and not adapted to today's working methods, owing their fragility. A new typeface had to be found with a design that corresponded to today's taste. Thus we have created Arsen, a modern and elegant typeface, both practical and robust... In recent years, a new tendency has become manifest in the dec

abcdefghijklmnopqrstuvwxyz 0123456789
 ABCDEFGHIJKLMNOPQRSTUVWXYZ &

38 pt

While the simplicity of the lines has been preserved, the straightness is yielding & a distinguished elegance is coming into it
DISTINGUISHED ELEG

24 pt

Pro

with a selection of
 OpenType Pro features

However, most of the existing types were old-fashioned & not adapted to today's working methods, owing to their fragility. A new typeface had to be found with a design that corresponded to today's taste. Therefore we have created Arsen, a modern and elegant typeface

18 pt

In recent years, a new tendency has become manifest in the decorative arts. While the simplicity of the lines has been preserved, the straightness is yielding and a distinguished elegance is coming into its own again. Typography has not been neglected in these developments, which have been expressed by an ob

14 pt

However, most of the existing types were old-fashioned and not adapted to today's working methods, owing their fragility. A new typeface had to be found with a design that corresponded to today's taste. Thus we have created Arsen, a modern and elegant typeface, both practical and robust... In recent years, a new tendency has b

abcdefghijklmnopqrstuvwxyz 0123456789
 ABCDEFGHIJKLMNOPQRSTUVWXYZ &

38 pt

While the simplicity of the lines has been preserved, the straightness is yielding & a distinguished elegance is coming into its own
DISTINGUISHED ELEG

24 pt

Pro

with a selection of
 OpenType Pro features

However, most of the existing types were old-fashioned & not adapted to today's working methods, owing to their fragility. A new typeface had to be found with a design that corresponded to today's taste. Therefore we have created Arsen, a modern and elegant typeface, both practical

18 pt

In recent years, a new tendency has become manifest in the decorative arts. While the simplicity of the lines has been preserved, the straightness is yielding and a distinguished elegance is coming into its own again. Typography has not been neglected in these developments, which have been expressed by an obvious reversion

14 pt

However, most of the existing types were old-fashioned and not adapted to today's working methods, owing their fragility. A new typeface had to be found with a design that corresponded to today's taste. Thus we have created Arsen, a modern and elegant typeface, both practical and robust... In recent years, a new tendency has become manifest

abcdefghijklmnopqrstuvwxyz 0123456789
 ABCDEFGHIJKLMNOPQRSTUVWXYZ &

38 pt

While the simplicity of the lines has been preserved, the straightness is yielding & a distinguished elegance is coming in DISTINGUISHED ELE

24 pt

Pro

with a selection of
 OpenType Pro features

However, most of the existing types were old-fashioned & not adapted to today's working methods, owing to their fragility. A new typeface had to be found with a design that corresponded to today's taste. Therefore we have created Arsen, a modern and elegant typ

18 pt

In recent years, a new tendency has become manifest in the decorative arts. While the simplicity of the lines has been preserved, the straightness is yielding and a distinguished elegance is coming into its own again. Typography has not been neglected in these developments, which have been expressed

14 pt

However, most of the existing types were old-fashioned and not adapted to today's working methods, owing their fragility. A new typeface had to be found with a design that corresponded to today's taste. Thus we have created Arsen, a modern and elegant typeface, both practical and robust... In recent years, a new tenden

abcdefghijklmnopqrstuvwxyz 0123456789
 ABCDEFGHIJKLMNOPQRSTUVWXYZ &

38 pt

*While the simplicity of the lines has been preserved, the straightness is yielding & a distinguished elegance is coming into its own again. **DISTINGUISHED ELEGANCE***

24 pt

Pro

with a selection of
 OpenType Pro features

However, most of the existing types were old-fashioned & not adapted to today's working methods, owing to their fragility. A new typeface had to be found with a design that corresponded to today's taste. Therefore we have created Arsen, a modern and elegant typeface

18 pt

In recent years, a new tendency has become manifest in the decorative arts. While the simplicity of the lines has been preserved, the straightness is yielding and a distinguished elegance is coming into its own again. Typography has not been neglected in these developments, which have been expressed by an ob

14 pt

However, most of the existing types were old-fashioned and not adapted to today's working methods, owing to their fragility. A new typeface had to be found with a design that corresponded to today's taste. Thus we have created Arsen, a modern and elegant typeface, both practical and robust... In recent years, a new tendency ha

abcdefghijklmnopqrstuvwxyz 0123456789
 ABCDEFGHIJKLMNOPQRSTUVWXYZ &

38 pt

**While the simplicity of the lines has been preserved, the straightness is yielding & a distinguished elegance is coming i
 DISTINGUISHED ELE**

24 pt

Pro

with a selection of
 OpenType Pro features

However, most of the existing types were old-fashioned & not adapted to today's working methods, owing to their fragility. A new typeface had to be found with a design that corresponded to today's taste. Therefore we have created Arsen, a modern and elegant

18 pt

In recent years, a new tendency has become manifest in the decorative arts. While the simplicity of the lines has been preserved, the straightness is yielding and a distinguished elegance is coming into its own again. Typography has not been neglected in these developments, which have been expres

14 pt

However, most of the existing types were old-fashioned and not adapted to today's working methods, owing their fragility. A new typeface had to be found with a design that corresponded to today's taste. Thus we have created Arsen, a modern and elegant typeface, both practical and robust... In recent years, a new te

abcdefghijklmnopqrstuvwxyz 0123456789
 ABCDEFGHIJKLMNOPQRSTUVWXYZ &

38 pt

While the simplicity of the lines has been preserved, the straightness is yielding & a distinguished elegance is coming
DISTINGUISHED ELE

24 pt

Pro

with a selection of
 OpenType Pro features

However, most of the existing types were old-fashioned & not adapted to today's working methods, owing to their fragility. A new typeface had to be found with a design that corresponded to today's taste. Therefore we have created Arsen, a modern and elegant t

18 pt

In recent years, a new tendency has become manifest in the decorative arts. While the simplicity of the lines has been preserved, the straightness is yielding and a distinguished elegance is coming into its own again. Typography has not been neglected in these developments, which have been expressed

14 pt

However, most of the existing types were old-fashioned and not adapted to today's working methods, owing their fragility. A new typeface had to be found with a design that corresponded to today's taste. Thus we have created Arsen, a modern and elegant typeface, both practical and robust... In recent years, a new tend